

Fiber Optic Cable Distribution Frame Reel



Fiber Optic Cable Distribution Frame Reel



An Optical Distribution Frame (ODF) is a dedicated unit designed to organize, terminate, and interconnect fiber optic cables. It brings together fiber splicing, patching, and cable routing in a ...



Fiber optic distribution frame (ODF), also known as fiber patch panel or optical distribution frame, is a rack-mount or wall-mount enclosure that provides organized termination, splicing, and patching of ...



Achieve successful cable management, handle high amounts of fiber cable and add density to fiber frames with the new DCX Optical Distribution Frame (ODF) System which features innovations like ...



Managing up to 3,168 fibers per frame, the FlexCore offering makes it easy to create multiple configurations using just three modular building blocks comprised of a 600mm frame and 150mm and ...



Clearfield extends the flexibility of the Clearview[®] Cassette to our FieldSmart[®] frame and panel systems. Complete compatibility in footprint and route paths between the frames allow you to pick ...



Unlike traditional metal-style reels, MARS is a lightweight, modular system constructed of an impact modified polymer that is easily transported. It is ideal for applications where cable needs to be ...



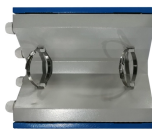
You can build the (ODF) system that conforms to your fibre-distribution requirements, with two RFO frame formats and two RFO chassis for optimal connectivity, management and scalability.



Optical Distribution Frame (ODF) is integrated components in any fiber management system to handle termination and cross-connection of cables. Pre-terminated ODFs with cables are pre-installed with ...



OTRANS manufactures cable distribution products for network wire management, includes optical fiber distribution frame, rack mount fiber optic patch panel, wall mount fiber patch panel, fiber cable copper ...



The Fiber Distribution Frame (FDF) is a critical supporting device in optical transmission systems primarily used for tasks such as fiber splicing at cable terminals, optical connector installation, route ...

Contact Us

For more information, pricing, or custom energy solutions, please contact us:

Website: <https://www.gdroofing.co.za>

Email: sales@gdroofing.co.za

Phone: +27 72 418 9365

Address: 22 Electron Avenue, Isando, Johannesburg, 1600, South Africa

This document is for informational purposes only. Specifications subject to change without notice.

