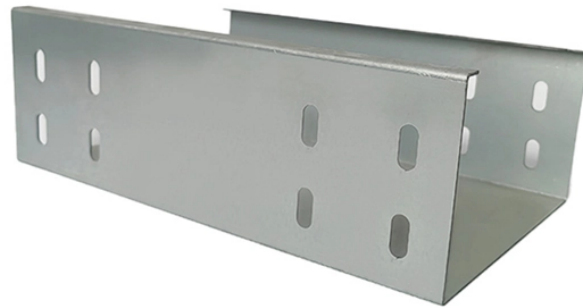


Fiber Optic Terminal Box LC Empty Box



Fiber Optic Terminal Box LC Empty Box



6-Core FTTH Fiber Distribution Termination Box with 6 SC Adapters, IP65 Waterproof, Wall-Mount Enclosure for Residential/Commercial Fiber Optic Splicing & Management (with 6 SC Adapter)



DIN Rail termination boxes are particularly effective in limited spaces, allowing for the efficient organization of fiber optic cables. Their advanced design enables easy installation and maintenance.



Equipped with 8 LC adapters to connect pigtails, one power terminal block for passing power cable, a future-proof fiber network system with power feed is easy to obtain.



The fiber optic terminal box is designed for FTTx applications, accommodating at least 4-16 users. It provides ample space for splicing, splitting, storage, and cable management. Suitable for both indoor ...



Available for both 12-fiber and 24-fiber configurations, they fit into fiber optic enclosures and provide a reliable, organized solution for on-site fiber optic terminating.



Fiber Optic Termination Box is used in the end termination of drop cables in residential buildings and villas, to fix and splice with pigtails. UnitekFiber supplies various type of fiber Optic termination box ...



Fiber optic terminal box is a fiber management product for fiber link distribution and protection in FTTH network. Suitable for distribution and termination of various fiber optic systems. ...



CommScope wall boxes offer efficient fiber connectivity. Easy installation, versatile sizes, and superior cable management.



Compatible with SC, FC, ST, and LC connectors, this terminal box provides flexible solutions for fiber optic network installations, ensuring reliable protection and easy maintenance of fiber connections.



Techlogiks fiber terminal box can be applied in the straight through and branch connection of indoor optical cables, available for the distribution connection of various optical fiber systems, fit for wall ...

Contact Us

For more information, pricing, or custom energy solutions, please contact us:

Website: <https://www.gdroofing.co.za>

Email: sales@gdroofing.co.za

Phone: +27 72 418 9365

Address: 22 Electron Avenue, Isando, Johannesburg, 1600, South Africa

This document is for informational purposes only. Specifications subject to change without notice.

