

# GDR Telecom Site Energy Systems

## Fiber optic cable mid-segment



## Fiber optic cable mid-segment



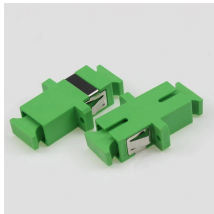
Explore different types of fiber optic cables, from single mode to armored and LC uniboot options. Learn how to choose the right fiber jumper for your data center, telecom, or FTTH ...



At this point, you have successfully opened a fiber optic cable mid-span with zero damage to the cladding. I will cover the tapping setup and execution in my next post.



Given the growing need for fiber connectivity, this Fiber Optic Cable Primer was designed to assist in your understanding of fiber optics and their applications.



Midspan access involves opening the cable by removing the jacket and strength members, separating the tubes of fibers passing through the drop point and opening only the one buffer tube containing ...



Midspan access involves opening the cable by removing the jacket and strength members, opening the buffer tube and splicing only the fibers being dropped at that point.



## Contact Us

For more information, pricing, or custom energy solutions, please contact us:

Website: <https://www.gdroofing.co.za>

Email: [sales@gdroofing.co.za](mailto:sales@gdroofing.co.za)

Phone: +27 72 418 9365

Address: 22 Electron Avenue, Isando, Johannesburg, 1600, South Africa

This document is for informational purposes only. Specifications subject to change without notice.

