

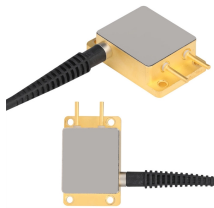
Fiber optic circulator parameters



Fiber optic circulator parameters



Explore the magneto-optic principles and internal design that allow optical circulators to isolate signals for efficient bi-directional fiber communication.



Fiber optic circulators act as signal routers, transmitting light from an input fiber to an output fiber, but directing light that returns along that output fiber to a third port.



Fiber optic circulators are essential components that enable smarter, more efficient directional light management in modern optical networks. By ...



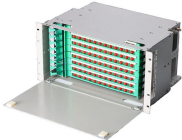
Optical circulators operate based on Faraday rotation and polarization control. Inside the device, a magneto-optic crystal (commonly TGG - Terbium Gallium Garnet) and polarizing ...



The key functionality of a fiber optical circulator is directing light sequentially from port to port with low loss in only one direction which results in the separation of signals which travel along an optical fiber ...



Unlike isolators, which simply block backward reflections, circulators enable bidirectional communication by directing light from Port 1 → Port 2, Port 2 → Port 3, and so on, while maintaining ...



Because of their high isolation of the input and reflected optical powers and their low insertion loss, optical circulators are widely used in advanced fiber-optic communications and fiber-optic sensor ...



Fiber optic circulators are essential components that enable smarter, more efficient directional light management in modern optical networks. By ensuring controlled, unidirectional ...



In fiber optic sensing systems, optical circulators help you monitor physical parameters such as temperature, strain, pressure, and vibration. They route signals through different sensing ...



The CIR-1310-50-APC broadband fiber optic circulator is specifically designed for OCT applications. This circulator boasts a broader wavelength range than our standard 1310 nm SM fiber optical circulator ...



For an optical circulator, important specifications also include insertion loss, isolation, PDL, and return loss. In addition, since a circulator has more than two terminals, directionality is also an important ...

Contact Us

For more information, pricing, or custom energy solutions, please contact us:

Website: <https://www.gdroofing.co.za>

Email: sales@gdroofing.co.za

Phone: +27 72 418 9365

Address: 22 Electron Avenue, Isando, Johannesburg, 1600, South Africa

This document is for informational purposes only. Specifications subject to change without notice.

