

Fiber optic module models single-mode multi-mode



Fiber optic module models single-mode multi-mode



Learn all about the differences between single mode and multimode cables, as well as the various fiber wavelengths and standard core sizes used in fiber optics.



A guide to single-mode vs multimode SFP modules. Covers fiber types, wavelengths, distances, BiDi, CWDM/DWDM, SMF vs MMF selection, and application scenarios.



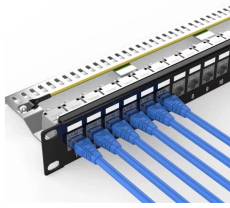
In the world of fiber optic networks, the choice between single-mode and multi-mode SFP (Small Form-factor Pluggable) modules drives performance, distance, cost, and application suitability.



There are two main types of fiber optic cables: single mode and multimode. Although they can do the same job in some instances, the different construction methods make each of them better ...



Learn how single-mode and multi-mode transceivers differ, compatibility rules, testing tips, and best practices for reliable fiber deployments.



Discover ROI-boosting fiber choices: Single Mode vs Multimode Fiber. Get the right speed & savings for your network—download our guide for free today!



Ever wonder how data zooms across cities and continents at lightning speed? The secret lies in fiber optic technology, and understanding the basics—1-core, 2-core, Single Mode (SM), and ...



Learn the differences between multimode (OM1-OM5) and single mode (OS1-OS2) fiber optic cables—speed, distance, applications, and how to choose the right one for data centers and ...



Learn the key differences between single mode vs multimode fiber cables and choose the right one for your fiber optic system.



Ever wonder how data zooms across cities and continents at lightning speed? The secret lies in fiber optic technology, and understanding the basics—1 ...



Whether you're designing a short-range data center network or a long-distance metro backbone, understanding the distinctions between single vs. dual fiber and single-mode vs. multi ...

What Is Single Mode and What Is Multimode? Single Mode vs. Multimode Fiber: Key Differences Is Multimode Better? Choosing The Right Fiber Optic Cable Single mode and multimode fiber optic cables are two different types of fiber optic cable aimed at different use cases. Single mode cables are typically made with a single strand of glass at their core, leading to a narrower core of the cabling, and more robust signal integrity over greater distances. They can be further divided into OS1 and OS2 cables. See more on cable matters.

```
.b_imgcap_altitle p strong,.b_imgcap_altitle .b_factrow  
strong{color:#767676}#b_results .b_imgcap_altitle{line-height:22px}.b_imgcap_altit  
le{display:flex;flex-direction:row-reverse;gap:var(--mai-smtc-padding-card-nested-  
default)}.b_imgcap_altitle .b_imgcap_img{flex-shrink:0;display:flex;flex-  
direction:column}.b_imgcap_altitle .b_imgcap_main{min-  
width:0;flex:1}.b_imgcap_altitle .b_imgcap_img>div,.b_imgcap_altitle .b_imgcap_img  
a{display:flex}.b_imgcap_altitle .b_imgcap_img img{border-radius:var(--mai-smtc-  
corner-card-default)}.b_imagePair.square_s>  
ner{width:50px}.b_imagePair.square_s{padding-left:60px}.b_imagePair.square_s>  
ner{margin:2px 0 0 -60px}.b_imagePair.square_s.reverse{padding-left:0;padding-  
right:60px}.b_imagePair.square_s.reverse> ner{margin:2px -60px 0  
0}.b_ci_image_overlay: hover{cursor:pointer}  
sightsOverlay,#OverlayIFrame.b_mcOverlay sightsOverlay{position:fixed;top:5%;left:  
5%;bottom:5%;right:5%;width:90%;height:90%;border:0;border-radius:15px;margin:0  
;padding:0;overflow:hidden;z-index:9;display:none}#OverlayMask,#OverlayMask.b_  
mcOverlay{z-index:8;background-color:#000;opacity:.6;position:fixed;top:0;left:0;wid  
th:100%;height:100%}p>.news_dt{color:#767676}wolontek
```

Contact Us

For more information, pricing, or custom energy solutions, please contact us:

Website: <https://www.gdroofing.co.za>

Email: sales@gdroofing.co.za

Phone: +27 72 418 9365

Address: 22 Electron Avenue, Isando, Johannesburg, 1600, South Africa

This document is for informational purposes only. Specifications subject to change without notice.

