

## Fiber optic network interface card wavelength division multiplexing



### Overview

WDM, CWDM and DWDM are based on the same concept of using multiple wavelengths of light on a single fiber but differ in the spacing of the wavelengths, number of channels, and the ability to amplify the multiplexed signals in the optical space. Overview In, wavelength-division multiplexing (WDM) is a technology which a number of signals onto a single by using different (i.e., colors) of. A WDM system uses a at the to join the several signals together and a at the to split them apart. With the right type of fiber, it is possible to have a device that does both s.



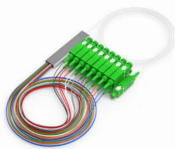
## Fiber optic network interface card wavelength division multiplexing



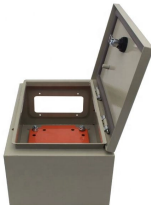
Wavelength Division Multiplexing (WDM) stands out as a cornerstone, enabling multiple data streams to travel simultaneously over a single fiber. This guide delves into the principles, types, ...



Wavelength Division Multiplexing (WDM) stands out as a cornerstone, enabling multiple data streams to travel simultaneously over a single fiber. This ...



Here, we demonstrate a promising simplified coherent receiver exhibiting a robust performance against polarisation fluctuations over an installed fibre network.



Wavelength division multiplexing or WDM allows the combining of a number of independent information-carrying wavelengths onto the same fiber, because of the wide spectral ...



The implementation and application of Wavelength Division Multiplexing (WDM) technology revolutionizes the capacity and efficiency of fiber optic networks, enabling simultaneous ...



This device takes advantage of the fact that different wavelengths of light will not interfere with each other when they are carried over the same optical fiber; this principle is known as ...



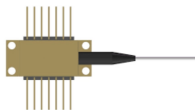
In this project, a network interface card (NIC) for a fiber optic local area network has been designed and simulated. In the proposed network, each NIC has two optical transmitters and receivers on it, ...



DWDM is an optical multiplexing technology that increases the bandwidth of existing fiber optic backbones. By using multiple wavelengths to transmit different data streams over a single fiber, ...



Whereas in the first optical communications networks, light was transmitted through the fiber using a single wavelength, WDM permits light at multiple, different wavelengths, to be transmitted through a ...



Discover how Wavelength Division Multiplexing (WDM) uses light to exponentially increase data transmission capacity in fiber optics.



WDM, CWDM and DWDM are based on the same concept of using multiple wavelengths of light on a single fiber but differ in the spacing of the wavelengths, number of channels, and the ability to amplify ...

## Contact Us

For more information, pricing, or custom energy solutions, please contact us:

Website: <https://www.gdroofing.co.za>

Email: [sales@gdroofing.co.za](mailto:sales@gdroofing.co.za)

Phone: +27 72 418 9365

Address: 22 Electron Avenue, Isando, Johannesburg, 1600, South Africa

This document is for informational purposes only. Specifications subject to change without notice.

