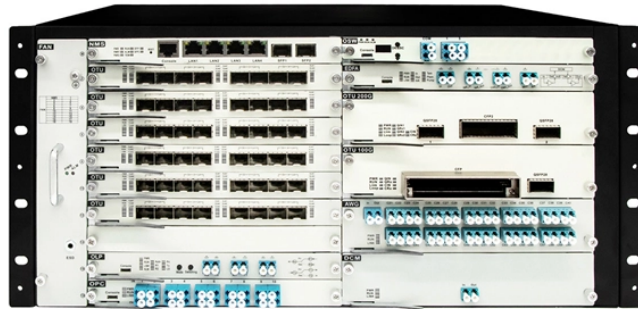


Fiber optic patch cord splitter test



Fiber optic patch cord splitter test



A copper patch cord and fiber jumper connection test was conducted to see which brands can consistently pass industry standards. See the results here.



Once installed, the splitter simply becomes one source of loss in the cable plant and is tested as part of that cable plant loss for insertion loss testing. Testing splitters with an OTDR is not the same in each ...



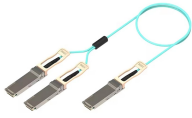
This article describes the correct method for testing a balanced PON splitter for port loss using the CertiFiber® Pro, there will be a further article to address unbalanced PON splitters.



Testing a splitter or other passive fiber optic devices like switches is little different from testing a patchcord or cable plant using the two industry standard tests, OFSTP-14 for double-ended loss ...



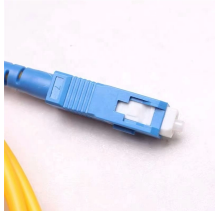
Start by connecting a launch reference cable to the optical light source with the correct wavelength (since some splitters depend on the wavelength). Then, use the optical power meter to ...



Patch cords or equipment jumpers are used to bridge the network electronic ports to the fiber optic link contained between patch panels (also known as “cross-connects”). Figure 1 below symbolically ...



Ensuring the performance and reliability of fiber optic patch cords is fundamental to optical network integrity. This article dives into advanced testing methodologies — polarity testing, IL/RL ...



There is something different between testing an optical splitter and a patch cable although both of them use an optical power meter and light source to test. In this tutorial, we are going to ...



The industry's first optical fiber multimeter (EXFO's Optical Explorer also known as the OX1) was specifically built for these tests. Just connect the fiber under test and push the start button; all the ...



FTTH / PON Engineering Tool FTTH / PON Splitter Loss Calculator Estimate whether an FTTH or PON optical link is feasible by calculating PLC splitter loss, fiber attenuation, connector loss, splice loss ...

Contact Us

For more information, pricing, or custom energy solutions, please contact us:

Website: <https://www.gdroofing.co.za>

Email: sales@gdroofing.co.za

Phone: +27 72 418 9365

Address: 22 Electron Avenue, Isando, Johannesburg, 1600, South Africa

This document is for informational purposes only. Specifications subject to change without notice.

