

## Fiber optic speed and optical modules



## Fiber optic speed and optical modules



The complete technical guide to SFP optical modules (SFP, SFP+, SFP28). Understand the core function, compare data rates (1G to 25G), learn critical compatibility rules, and follow our 5 ...



SFP (Small Form-factor Pluggable) optical modules are compact, hot-pluggable transceivers that enable network equipment to connect seamlessly to fiber and copper links. These ...



Learn the differences between SFP, SFP+, GBIC, and XFP modules - speeds, distances, and compatibility, from Network-Switch experts.



Explore the ultimate guide to optical modules. Learn types, functions, performance metrics & how to choose the right module for your fiber network.



Find the optical transceiver to fit your network 800G transceivers Get high-speed 800G modules for QSFP-DD or OSFP ports for AI and data center applications.



Read the definitive 2026 guide on SFP modules. We explain Single Mode vs Multimode, DDM diagnostics, and how to choose the right transceiver for Cisco, Juniper, and more.



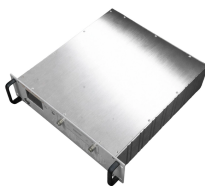
The integration of SFP modules with fiber transmission systems, network management solutions, and AI-driven monitoring is shaping a future where rapid, stable, and intelligent networks ...



This article takes a deep dive into the world of optical modules, exploring their evolution from 400G to the mind-boggling 3.2T, and unpacking the cutting-edge technologies shaping their future.



This fiber optic module guide walks through the core families—SFP, SFP+, SFP28, and beyond—balancing speed, reach, and compatibility with real-world deployments. Engineers will find ...



An optical transceiver is a hot-swappable, integrated optoelectronic device that facilitates bidirectional data transmission by converting electrical signals into optical signals (E-O conversion) and vice versa ...

## Contact Us

For more information, pricing, or custom energy solutions, please contact us:

Website: <https://www.gdroofing.co.za>

Email: [sales@gdroofing.co.za](mailto:sales@gdroofing.co.za)

Phone: +27 72 418 9365

Address: 22 Electron Avenue, Isando, Johannesburg, 1600, South Africa

This document is for informational purposes only. Specifications subject to change without notice.

