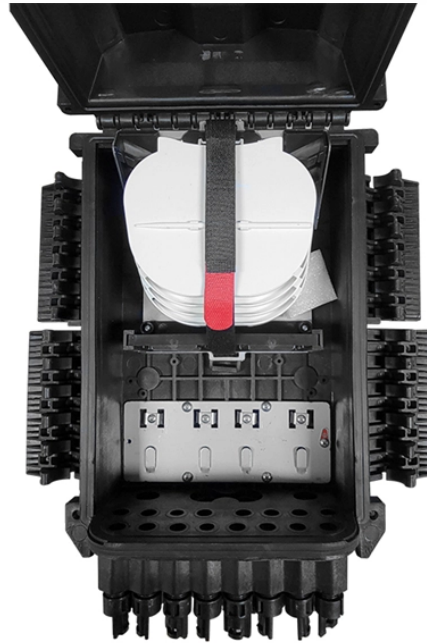


Fiberglass Cable Tray Technology and Process



Overview

This article will deeply analyze the definition, structure, performance, and application scenarios of the FRP Cable Tray, and explore its collaborative value with derivative products such as the FRP Cable Ladder (Fiberglass Reinforced Plastic Cable Ladder), providing. This article will deeply analyze the definition, structure, performance, and application scenarios of the FRP Cable Tray, and explore its collaborative value with derivative products such as the FRP Cable Ladder (Fiberglass Reinforced Plastic Cable Ladder), providing. For more than 30 years, MP Husky's Fiberglass Cable Tray systems have been tested and proven in the harsh environment of the offshore Oil & Gas industry. Our Fiberglass Cable Tray gives you the load capacity of steel, plus the inherent characteristics afforded by Pultrusion Technology: A fiberglass cable tray, also called an FRP cable tray or cable bridge in some regions, is a structural support system used to route and protect electrical and instrumentation cables. It is manufactured from fiber reinforced polyester or vinyl ester resin so it has high corrosion resistance, long. Enduro cable tray (sometimes called cable ladder) sets the industry standard for high-quality fiberglass cable tray. Subject to the corrosive conditions inherent in petroleum products, plus the

daily punishment of exposure to wind, weather, and saltwater. Our fiberglass cable. Against this backdrop, the FRP Cable Tray (Fiberglass Reinforced Plastic Cable Tray) has become the preferred solution in fields such as electricity, communication, and chemical industry, thanks to its unique material properties and design advantages. While fiberglass cable tray systems utilize a heat-cured resin that doesn't melt at.

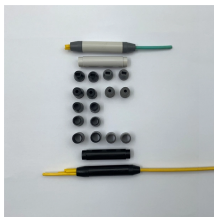
Fiberglass Cable Tray Technology and Process



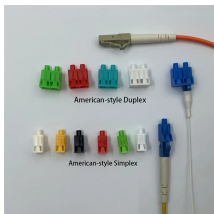
Fiberglass cable tray is designed to provide a robust, reliable, cost-effective cable management solution in complex environments where traditional materials perform poorly.



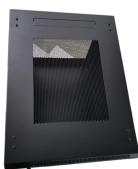
Technical data sheet for B-Line fiberglass cable tray installation, covering safety, cutting, support, and sizing according to NEMA standards.



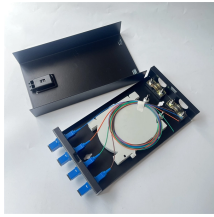
Learn How Fiberglass Reinforced Plastic Trays Outperform Steel in Corrosion Resistance, Insulation, and Cost Efficiency. Explore Applications in Power, Chemical, and Smart Buildings.



Our Fiberglass tray weighs 1/3 that of steel trays and is pound for pound stronger. This makes the tray easy to install, reduces the possibility of lifting accidents, and lowers transportation costs. MP Husky ...



Our fiberglass cable tray gives you the load capacity of steel plus the inherent characteristics afforded by our Protrusion Technology: non-conductive, non-magnetic, and corrosion-resistant. Although light in ...



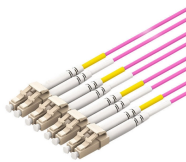
Learn How Fiberglass Reinforced Plastic Trays Outperform Steel in Corrosion Resistance, Insulation, and Cost Efficiency. Explore Applications in Power, ...



This document summarizes the manufacturing process and properties of fiber reinforced plastic (FRP) cable trays produced by EPP Composites Pvt. Ltd. FRP cable trays are made through pultrusion ...



Our fiberglass cable tray has been designed by our technical experts to meet customer needs for quality performance in the harshest environments. Our Glass-Reinforced Polymer (GRP) cable tray systems ...



Learn fiberglass cable tray types and specs. Compare trough, tray, ladder and epoxy composite systems to choose the right cable support for industrial projects.



Eaton's B-Line series fiberglass cable tray systems provide an economical support system with superior strength at room temperatures and dependable load bearing capabilities at continuously elevated ...



With characteristics such as high strength-to-weight ratio, corrosion resistance, electrical insulation, flexible installation, and long lifespan, they gradually replace traditional metal trays, becoming an ...

Contact Us

For more information, pricing, or custom energy solutions, please contact us:

Website: <https://www.gdroofing.co.za>

Email: sales@gdroofing.co.za

Phone: +27 72 418 9365

Address: 22 Electron Avenue, Isando, Johannesburg, 1600, South Africa

This document is for informational purposes only. Specifications subject to change without notice.

