

Fibre Channel hard drives are used in



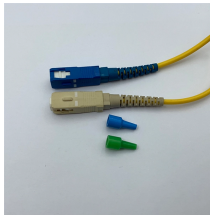
Fibre Channel hard drives are used in



This article explores the key features, benefits, and use cases of the HPE EVA Fibre Channel hard drive, explaining why it remains a popular choice in ...



These drives utilize Fibre Channel technology—a high-speed network technology primarily used in storage area networks (SANs)—to deliver fast and secure data transfer between servers and storage ...



Fibre Channel can be used to transport data from storage systems that use solid-state flash memory storage medium by transporting NVMe protocol commands.



Fibre Channel is a high-speed storage networking technology used to connect network storage devices, such as hard drives, data tapes, and network storage systems.



Fibre Channel (FC) storage has been widely used in enterprise-level storage systems. It offers high reliability, scalability, and performance, making it a popular choice for mission-critical ...



FC HDDs are typically used in high-performance environments where high throughput and low latency are important, such as in enterprise data centers and high-end storage arrays. They ...



Fibre Channel HDDs utilize the Fibre Channel interface, a high-speed, reliable, and scalable technology specifically designed for storage networking. These drives are commonly used in enterprise storage ...



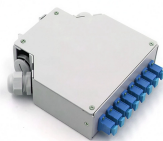
Fiber / Fibre Channel hard drives are almost exclusively for usage in servers that use hot swappable (hot-swap) drives with a Fiber Channel 40-pin "SCA-2" hot pluggable backplane. You use a hard ...



Fiber / Fibre Channel hard drives are almost exclusively for usage in servers that use hot swappable (hot-swap) drives with a Fiber Channel 40-pin "SCA-2" hot pluggable backplane. You use a hard ...



This article explores the key features, benefits, and use cases of the HPE EVA Fibre Channel hard drive, explaining why it remains a popular choice in enterprise storage solutions.



Fibre channel is a type of SCSI hard drive technology used in high-end systems with multiple hard drives installed. Using optical fiber to connect devices, fibre channel supports full-duplex data transfer rates ...

Contact Us

For more information, pricing, or custom energy solutions, please contact us:

Website: <https://www.gdroofing.co.za>

Email: sales@gdroofing.co.za

Phone: +27 72 418 9365

Address: 22 Electron Avenue, Isando, Johannesburg, 1600, South Africa

This document is for informational purposes only. Specifications subject to change without notice.

