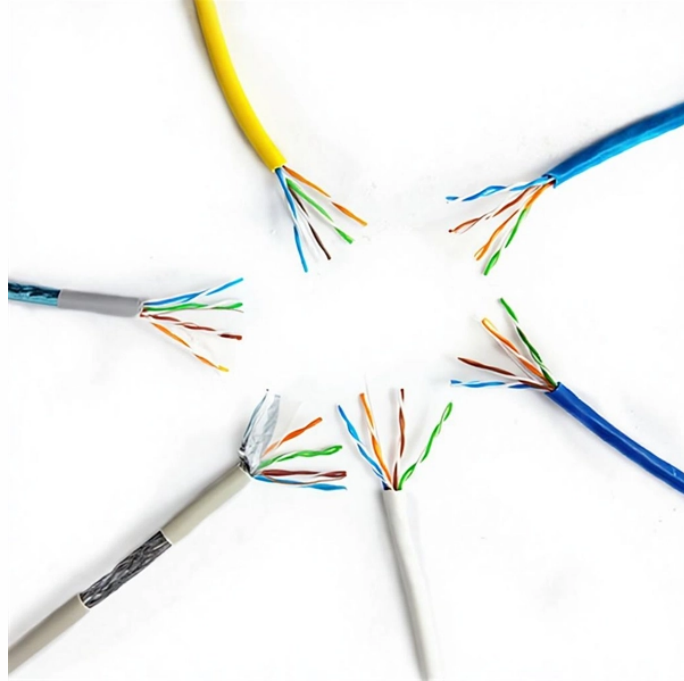


## Fiji Liquid-Cooled Switch 1 6T



## Fiji Liquid-Cooled Switch 1 6T



The DS6001 is a 20U, 64-port x 1.6TbE switch offering a hybrid cooled solution based on the 21-inch OCP ORv3 rack. Both switches are based on the new Broadcom Tomahawk 6 (TH6) switch chipset, ...



Alpha Networks Unveils 1.6T Liquid-Cooled Switch at COMPUTEX 2025 Powering the Future of Core Network Infrastructure Alpha Networks Inc. (TWSE: 3380), a leading provider of ...



The 1.6T switch from Alpha Networks employs a liquid-cooled solution that delivers more than 1.8 KW of cooling capacity per liquid-cooled board. The reduced footprint and higher thermal ...



The 1.6T switch from Alpha Networks employs a liquid-cooled solution that delivers more than 1.8 KW of cooling capacity per liquid-cooled board. The reduced footprint and higher thermal ...



As a critical building block of next-generation high-speed interconnects, 1.6T optical transceivers are being gradually introduced into next-generation switches and accelerated computing...



This guide covers what 1.6T OSFP is, how it differs from 800G, what OSFP-XD brings to the table, and what you need to know before deploying. FiberMall supplies 1.6T OSFP modules and ...



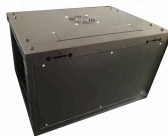
This article explains how this new 1.6T rate emerged, what the technical principles and key features of 1.6T optical modules are, the major module types involved, and the application ...



The 1.6T switch from Alpha Networks employs a liquid-cooled solution that delivers more than 1.8 KW of cooling capacity per liquid-cooled board. The ...



Learn how to choose the right 1.6T optical transceiver. This guide compares six NADDOD 1.6T OSFP modules across protocol, cooling design, transmission reach, and connectors for AI and ...



Alpha Networks Inc. (3380), the leading supplier of network communication solutions, announced today (9/22) the launch of its newly developed 1.6T liquid-cooled switch equipped with ...



Alpha Networks Inc. announced the launch of its newly developed 1.6T liquid-cooled switch equipped with the Broadcom Tomahawk 6 chip to deliver up to 102.4 Tbps of switching capacity. It is optimized ...

## Contact Us

For more information, pricing, or custom energy solutions, please contact us:

Website: <https://www.gdroofing.co.za>

Email: [sales@gdroofing.co.za](mailto:sales@gdroofing.co.za)

Phone: +27 72 418 9365

Address: 22 Electron Avenue, Isando, Johannesburg, 1600, South Africa

This document is for informational purposes only. Specifications subject to change without notice.

