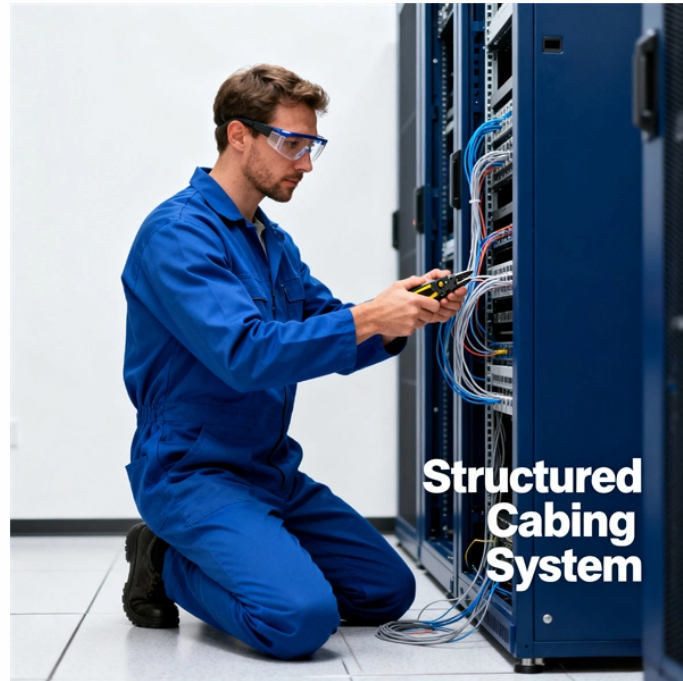


Finished dimensions of fire protection distribution boxes



Finished dimensions of fire protection distribution boxes



Features Continuously welded seams Foam-in-place seamless gasket 120-degree opening heavy-duty industrial hinges IP66 protection rating against dust and water according to IEC 60529 & anti ...



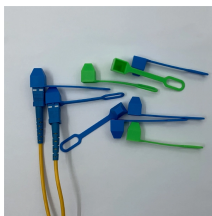
T& D supply customised fire proof junction boxes using the Abtech BPG range of enclosures fitted with ceramic terminals blocks to withstand extreme heat and fire with versatile cable termination options - ...



It features a luxurious design made from polycarbonate, ensuring resistance to fire and corrosion, and is easy to install. Various models are available with specific dimensions to meet customer installation ...



ABB offers an innovative enclosure system for fire prevention, which is constructed of fireproof materials, features optimum technology and is available in a variety of economical designs.



Area boxes can be installed in technical flooring or in false ceilings. Area boxes are offered in Cat. 5e and Cat. 6 and should be selected according to the size of the network.



Fire Retardant Electrical Wall Switch/Distribution Box, Find Details and Price about Power-Supply-Distribution Electrical Enclosure from Fire Retardant Electrical Wall Switch/Distribution Box - ...



As a leading manufacturer of high-quality cable junction and connection boxes, as well as durable surface-mounted distribution boards, Spelsberg is especially well-qualified for development of fire ...



The fire protection junction M-BOX is designed for connecting and/or branching cables of installations which guarantee continuous operation during fire conditions.



General Technical Particulars for LT Distribution Boxes : - The L.T. Distribution Boxes should be of the dimensions as per the drawing & details in the table furnished.



Maintaining electrical functions E30 - E90 Body made of polycarbonate, halogen-free High degree of protection IP65 Through holes with a diameter of 8x25 and 2x20 Mounting surfaces: ...



With the durability, robust IP67-rated protection, and resistance to vibration and environmental factors, these boxes deliver reliable performance in harsh conditions.



AF E-BOX is an intumescent sleeves certified under EN 1366-3 for the EI 120 requalification of flexible and rigid walls with electrical and junction boxes inside.

Contact Us

For more information, pricing, or custom energy solutions, please contact us:

Website: <https://www.gdroofing.co.za>

Email: sales@gdroofing.co.za

Phone: +27 72 418 9365

Address: 22 Electron Avenue, Isando, Johannesburg, 1600, South Africa

This document is for informational purposes only. Specifications subject to change without notice.

