

Fire safety regulations regarding obstructed electrical distribution boxes



2. Imported design is convenient for expansion.

The design of two inlets saves space and allows for rear line entry.

Overview

These regulations are contained in §§ 1910. 308 contain design safety standards for electric utilization systems. Included in this category are all electric equipment and installations used to provide electric power and light for. Electrical wiring and equipment for light, heat, or power purposes shall be installed in compliance with the requirements of subpart K of this part. Proper clearance prevents hazards such as electric shock, fires, and equipment damage, contributing to a safer working environment. Employee safety is particularly at risk if wiring is prone to accidental contact. Both the Occupational Safety and Health Administration (OSHA) and the National Fire Protection. When an employee receives a shock from an electrical circuit or appliance in the workplace, shutting off the source of power may be the only safe method of preventing the individual from contacting the electric source. If link is not available, please refer to 2019 code policies as our policies have not.

Fire safety regulations regarding obstructed electrical distribution



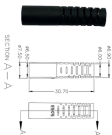
Electrical panel boxes in commercial buildings should be locked and accessible by trained personnel only. This panel is located in a large dishwashing area, where a wet floor might result in electrocution.



Any obstruction of an electrical panel, whether through storage or equipment, constitutes a breach of these safety regulations and poses significant fire and electrical risks.



Explore the 2022 fire code policies relevant to San José and learn how these regulations help guide fire safety and prevention in the community.



Guide to OSHA electrical panel clearance requirements. Learn about safety standards, compliance tips, common violations, and best practices for installation and maintenance.



It also includes work rules for the operation of electric supply and communications lines and equipment. This Code consists of the introduction, definitions, grounding rules, lists of referenced and ...



On single-car and multicar installations, equipment receiving electrical power from more than one source shall be provided with a disconnecting means for each source of electrical power.



Guide to OSHA electrical panel clearance requirements. Learn about safety ...



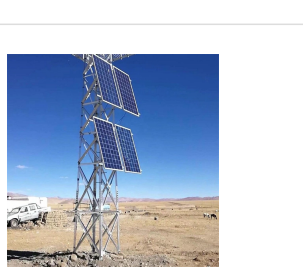
Replacing missing covers in electrical panels and boxes, and covering the openings that have unrestricted access to exposed energized electrical parts save workers from the danger of shock and ...



When energized junction boxes are uncovered, the wiring is vulnerable to damage and accidental contact. If easily combustible materials, such as paper or cardboard, are stored near unprotected ...



To determine this measurement, one must select the condition that applies to the installation. Then measure from exposed parts (soon to be live) or from the face of the enclosure, if ...



Storage shall not obstruct, or adversely affect, means of exit. All materials shall be stored, handled, and piled with due regard to their fire characteristics. Noncompatible materials, which may create a fire ...

Contact Us

For more information, pricing, or custom energy solutions, please contact us:

Website: <https://www.gdroofing.co.za>

Email: sales@gdroofing.co.za

Phone: +27 72 418 9365

Address: 22 Electron Avenue, Isando, Johannesburg, 1600, South Africa

This document is for informational purposes only. Specifications subject to change without notice.

