

Fireproofing and sealing construction location for cable trays



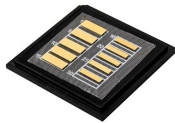
Fireproofing and sealing construction location for cable trays



ed seal for walls and floors. It is designed to be used with single cables, cable bundles or combustible and non-combustible pipes to prevent the spread of smoke, fire and heat. In addition the fire stopping ...



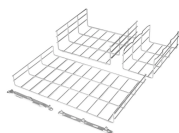
This guide explains the critical steps in fireproof cable trays acceptance, covering coating processes, inspection standards, and more. By following these steps, you can enhance durability ...



FireResistant Solutions provides cable tray covering and fire-protection systems designed to safeguard electrical and data infrastructure in commercial and multifamily buildings.



Fire protection solutions to protect cables, cable trays and cable systems. Discover our tested cable coatings and fire protection bandages!



Cable tray installation must comply with specific technical standards to ensure electrical safety, system reliability, and long-term maintainability. This document outlines the key requirements for cable tray ...



A generic guideline developed by the Cable Tray Institute indicates that cable trays should not be filled in excess of 40-50% of the inside area of the tray or of the tray's maximum weight based on the cable ...



In today's fast-paced construction and industrial environment, safety and reliability are paramount. For electrical contractors, one of the most critical components of a secure electrical ...



Use this product in new construction or update your fire protection in a renovation - the optional mounting bracket opens easily allowing retrofit installations.



Cable tray installation must comply with specific technical standards to ensure electrical safety, system reliability, and long-term maintainability. This document ...



The fire-resistant cable tray and conduit assemblies play a critical role in maintaining safe and compliant industrial operations, particularly within hazardous locations such as chemical plants, oil refineries, ...



Cable trays and busways at floor level or at slab penetrations shall have a waterstop no less than 50 mm in height. At slab penetrations, provide 20-30 mm of firestopping and install a fire ...



Cable trays and busways at floor level or at slab penetrations shall have a waterstop no less than 50 mm in height. At slab penetrations, provide ...

Contact Us

For more information, pricing, or custom energy solutions, please contact us:

Website: <https://www.gdroofing.co.za>

Email: sales@gdroofing.co.za

Phone: +27 72 418 9365

Address: 22 Electron Avenue, Isando, Johannesburg, 1600, South Africa

This document is for informational purposes only. Specifications subject to change without notice.

