

Foundation of the Main Distribution Box Shed



Overview

The main parts are the Miniature Circuit Breaker (MCB), Residual Current Device (RCD), busbars, and the main switch. Safe habits and checking the box often help stop electrical accidents. It ensures that electricity flows. “The main bars are the reinforcement bars positioned in the slab's tension zone (shorter span) to resist the bending moment and transmit the superimposed loads to the slab's provided supports. These Distribution Cabinets are to be outdoor type and to be fabricated out of 2 mm GI sheet steel. With the right materials, tools, and techniques, you can successfully build a durable and reliable foundation for your shed. Assessing the location and size is. Does My Shed Need a Foundation?

What is an On-Grade Foundation?

What is a Permanent Foundation?

Which One Should You Go With?

So, how big should your shed foundation be?

What Type of Foundation Is the Best?

Don't worry as in this article, we'll guide you step-by-step through everything you need to.

Foundation of the Main Distribution Box Shed



Are you looking to learn how to build a shed floor base? Here is a detailed guide with step by step instructions to help you understand what it takes to build a shed foundation.



The use of main bars and distribution bars in slab construction is crucial to the structural integrity of the building. Without them, the slab would be unable to bear the structure's load and ...



Learn about the internal structure of a distribution box, its components, functions, and key types. Understand its role in electrical systems and safety.



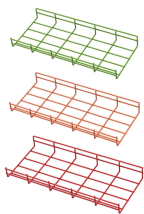
Building a strong, durable foundation is arguably the most critical step in building your shed. Learn which foundation type is right for you and how to build it.



Understanding its significance, this article covers what a distribution box is, how it functions, its structure, the various types available, and how it differs from other electrical boxes like ...



Main Bars and Distribution Bars in Slab Construction: Functions and Importance
 What Are Main Bars? Functions of Main Bars
 Are Distribution Bars Provided in A Two-Way slab? How Are Main Bars and Distribution Bars Placed in Slab Construction? Importance of Main Bars and Distribution Bars in Slab Construction
 Common Mistakes to Avoid When Using Main Bars and Distribution Bars
 Advantages of Using Main Bars and Distribution Bars in Slab Construction
 Disadvantages of Using Main Bars and Distribution Bars in Slab Construction
 Main Bars and Distribution Bars Formula
 As shown in the above drawing, the main bars are always positioned at the bottom of the slab reinforcement, and distribution bars sit on top of the main bar. For the HYSD bar and plain bars, the primary bar's diameter should not be less than 8mm and 10mm, respectively. See more on [qaqc in construction](#).
 .sb_doct_txt{color:#4007a2;font-size:11px;line-height:21px;margin-right:3px;vertical-align:super}.b_dark .sb_doct_txt{color:#82c7ff}ODISHA POWER TRANSMISSION CORPORATION LIMITED



General Technical Particulars for LT Distribution Boxes : - The L.T. Distribution Boxes should be of the dimensions as per the drawing & details in the table furnished.



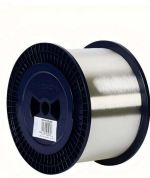
Build your shed foundation with our beginner's guide. Learn step-by-step for a stable base. Get started today!



You help keep your home safe by learning about your distribution box. If you know how MCBs, RCDs, busbars, and the main switch work together, you can stop dangers and stay safe.



Explore 7 proven shipping container foundation options from concrete slabs to gravel pads. Expert tips to choose the right one for your project.



Today I'm building the foundation for my massive new shed. There are several ways to approach this, but I decided to go with a floating foundation because it's the easiest and cheapest option...

Contact Us

For more information, pricing, or custom energy solutions, please contact us:

Website: <https://www.gdroofing.co.za>

Email: sales@gdroofing.co.za

Phone: +27 72 418 9365

Address: 22 Electron Avenue, Isando, Johannesburg, 1600, South Africa

This document is for informational purposes only. Specifications subject to change without notice.

