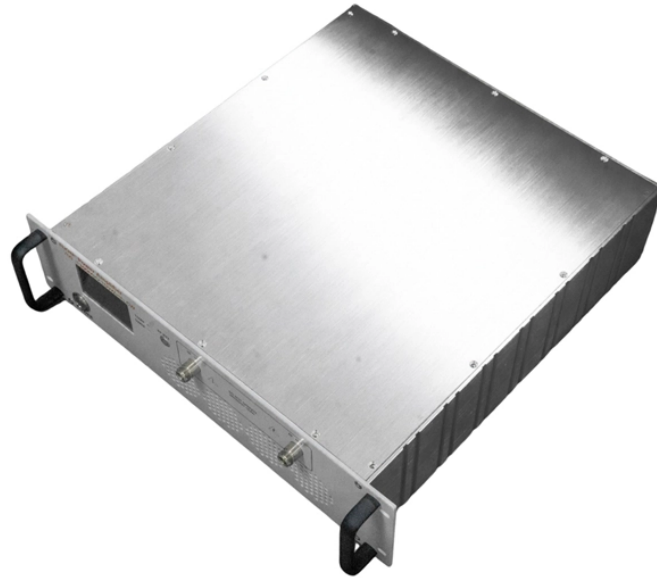
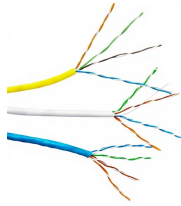


Ftth Engineering Optical Cable



Ftth Engineering Optical Cable



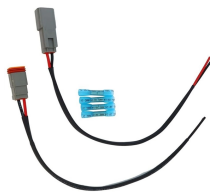
Suitable for FTTX networks and access networks. Can be used to connect subscriber units to building entry cabinets. Capable of accommodating 1 to 8 fibers. Approximate dimensions of 3x2 millimeters. ...



This guide explains FTTH Drop Cable structure, standards, fiber types, applications, and installation practices for modern FTTH last-mile networks.



Fiber Optic Cable Buying Guide Understand how to choose fiber optic cable by comparing single-mode vs. multimode, network speed and distance needs, cable jackets/fire ratings, connectors, cost and ...



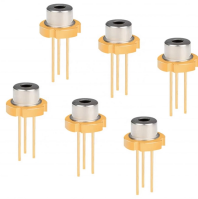
Our portfolio of products and engineering support is designed to address your specific challenges from speed of deployment, labor and cost considerations, performance requirements, future readiness, ...



Technical guide to pre-terminated FTTH cables, covering structure, connector types, outdoor routing, and installation standards for rapid FTTH rollout.



ASE have extensive experience in designing and implementing Fiber optic cable networks. Our team of experts has worked on countless projects, ranging from small-scale installations to large-scale ...



Fiber optic network design is not simply a theoretical framework—it is a disciplined engineering process that determines how infrastructure will perform, scale, and be maintained over ...



CommScope designs and manufactures a comprehensive line of fiber optic cables—from outside plant to indoor/outdoor and fire-rated indoor fiber cables.



If you are new to fiber optic network design, we recommend you study the design pages on the FOA Guide, read the FOA textbook Reference Guide to Fiber Optic Network Design, and perhaps take the ...



Our fiber optic cables are produced according to international standards, ensuring global compatibility and seamless integration into existing networks. We leverage advanced production technology and ...

Contact Us

For more information, pricing, or custom energy solutions, please contact us:

Website: <https://www.gdroofing.co.za>

Email: sales@gdroofing.co.za

Phone: +27 72 418 9365

Address: 22 Electron Avenue, Isando, Johannesburg, 1600, South Africa

This document is for informational purposes only. Specifications subject to change without notice.

