

Function and Uses of Ceramic Insert Dust Caps



Overview

Ceramic inserts are designed to be extremely hard, durable, and resistant to wear, abrasion, and impact. They are specifically designed to handle high-speed finishing and machining of superhard materials, including hardened steels, cast irons, and. FAR offers two types of ceramic inserts: WRI and MasterCeramic™. In industrial settings, ceramic inserts are commonly used in wear parts such as cutting tools. A dust cap and insert is a critical protective component used across various industries to shield threaded ports, connectors, and fluid or gas openings from contaminants such as dirt, moisture, dust, and debris.

Function and Uses of Ceramic Insert Dust Caps



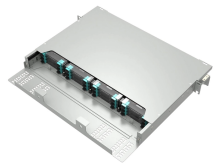
Ceramic inserts are widely used in CNC machining for high-speed cutting and difficult-to-machine materials (e.g., superalloys, hardened steels) due to their exceptional hardness, heat ...



Ceramic inserts excel in finishing hardened steels (HRC 45–65) and cast irons, delivering superior surface quality. They are often used in conjunction with diamond tools wholesale products to ...



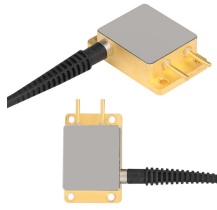
The integrated flow straighteners ensure a concentrated and powerful water jet density. The service life of a JetMax[®] ceramic insert is much longer than that of hardened steel nozzle inserts or other drilled ...



The MasterCeramic[™] insert provides deeper protection for the hammer, ensuring longer service life, reducing downtime, saving hours of maintenance, and increasing equipment uptime.



The sintered porous grain preforms can be composed of both fine and coarse particles and have comparatively high ceramic proportions of up to 50 %. Due to their structure, they are particularly ...



This article briefly discusses the differences in their use and the materials they are suitable for processing based on the types and properties of ceramic blades and cubic boron nitride ...



Ceramic inserts are designed to be extremely hard, durable, and resistant to wear, abrasion, and impact. In industrial settings, ceramic inserts are commonly used in wear parts such as cutting tools, pumps, ...



Ceramic inserts fall in the middle between coated carbide and CBN in both price and performance and are the preferred option to machine hard steel in the range of 45-55 HRC.



A well-designed cap or insert accommodates thermal cycling by using materials with low coefficients of thermal expansion or incorporating flexible joints. This ensures consistent performance in ...



Ceramic Cutting tools has good wear resistance and can be used to process difficult and high-hardness materials. Ceramic tools can be used for rough and finish machining of high-hardness...

Contact Us

For more information, pricing, or custom energy solutions, please contact us:

Website: <https://www.gdroofing.co.za>

Email: sales@gdroofing.co.za

Phone: +27 72 418 9365

Address: 22 Electron Avenue, Isando, Johannesburg, 1600, South Africa

This document is for informational purposes only. Specifications subject to change without notice.

