

## Function of Gigabit PoE Switches



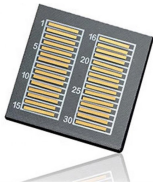
### Overview

This setup allows for simultaneous data delivery via gigabit connections to multiple devices, with speeds over 1 gig up to 10 gigs. Network switches form the backbone of any Local Area Network, or "LAN" (pronounced "lan") for short. On this page you will learn what differentiates a PoE enabled switch from a regular LAN switch, when you should use a PoE switch versus a PoE injector and, what exactly is PoE (Power over Ethernet). Power over Ethernet (PoE) works seamlessly with gigabit switches to provide both power and data over a single Ethernet cable. A PoE switch is a network switch that has PoE injection built-in, eliminating the need for separate power supplies for network devices.

## Function of Gigabit PoE Switches



In today's blog, we'll explain what a PoE switch is and how it powers devices through one Ethernet cable. We'll also look at the different types of PoE switches, their benefits, and how they can ...



**Managed Gigabit POE Switches:** These switches offer advanced features and controls such as VLAN setting, quality of service configuration, and SNMP monitoring. They are ideal for ...



Power over Ethernet (PoE) is a technology that allows network switches to transmit both power and data through an Ethernet cable simultaneously. PoE Switches simplify business network deployment in ...



Power over Ethernet (PoE) works seamlessly with gigabit switches to provide both power and data over a single Ethernet cable. Gigabit PoE switches are capable of delivering high-speed network data (up ...



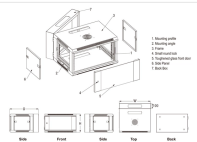
**What Are the Functions of a PoE Switch?** A PoE (Power over Ethernet) switch performs multiple essential functions in modern networking by integrating both power supply and data transmission ...



Multi-gigabit PoE can provide the bandwidth required by high-performance storage systems. This technology supports increased network demands in high-density server environments ...



In today's blog, we'll explain what a PoE switch is and how it powers devices through one Ethernet cable. We'll also look at the ...



Gigabit PoE switches eliminate the need for extra wiring while connecting IP cameras, VoIP phones, or wireless access points, as they can deliver power to any interconnected device.



PoE switches utilize a technology that allows them to send power and data over the same Ethernet cable. They achieve this by using separate wire pairs within the Ethernet cable: one ...



A PoE switch is a regular Fast Ethernet or Gigabit network switch that has Power over Ethernet functionality integrated. A Power over Ethernet switch both enables communication among network ...



PoE switches focus on delivering power through Ethernet cables, while Gigabit switches emphasize high-speed data transfer. Use Cases: PoE switches are ideal for networks with devices that require ...

## Contact Us

For more information, pricing, or custom energy solutions, please contact us:

Website: <https://www.gdroofing.co.za>

Email: [sales@gdroofing.co.za](mailto:sales@gdroofing.co.za)

Phone: +27 72 418 9365

Address: 22 Electron Avenue, Isando, Johannesburg, 1600, South Africa

This document is for informational purposes only. Specifications subject to change without notice.

