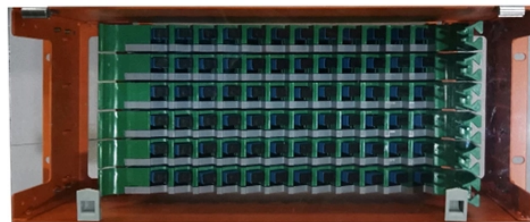


Function of North Asia Wavelength Division Multiplexer



Overview

Using the WDM technology, fiber optic links can be utilized for data transmission more efficiently. Each application is allocated to a dedicated color (wavelength) to communicate with a. In fiber-optic communications, wavelength-division multiplexing (WDM) is a technology which multiplexes a number of optical carrier signals onto a single optical fiber by using different wavelengths (i. This guide delves into the principles, types, applications, and future trends of WDM. Tailored for professionals sourcing solutions from CommMesh, it. Abstract Wavelength division multiplexing or WDM allows the combining of a number of independent information-carrying wavelengths onto the same fiber, because of the wide spectral region in which optical signals can be transmitted efficiently.

Function of North Asia Wavelength Division Multiplexer



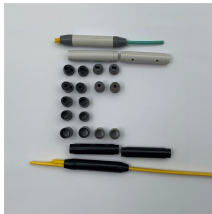
The wavelength multiplexing technology provides the ability to transmit more light beams, each having different wavelengths, using the same optical link. Due to the fact that wavelengths do not interfere, ...



Wavelength Division Multiplexing (WDM) is defined as a multiplexing technology used in fiber-optic transmission to maximize transmitted bit rates, enabling long-haul data, video, and voice ...



In fiber-optic communications, wavelength-division multiplexing (WDM) is a technology which multiplexes a number of optical carrier signals onto a single optical fiber by using different ...



WDM is an acronym used for Wavelength Division Multiplexing. It is a technique in which signals of different wavelength are multiplexed together in order to get transmitted over an optical link.



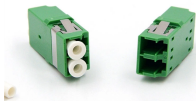
Wavelength-division multiplexing (WDM) is defined as a technology that multiplexes multiple optical carrier signals onto an optical fiber by using different wavelengths of laser light, enabling bidirectional ...



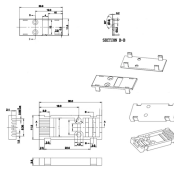
Wavelength Division Multiplexing (WDM) stands out as a cornerstone, enabling multiple data streams to travel simultaneously over a single fiber. This ...



At the transmitting end there are several independently modulated light sources, each emitting signals at a unique wavelength. Here a wavelength multiplexer is needed to combine these optical outputs into ...



Wavelength Division Multiplexing (WDM) stands out as a cornerstone, enabling multiple data streams to travel simultaneously over a single fiber. This guide delves into the principles, types, ...



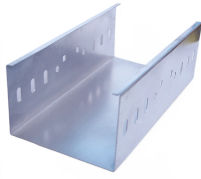
Explore the fundamentals of Wavelength Division Multiplexing (WDM), its types, benefits, challenges, and future prospects in our detailed guide.



Wavelength division multiplexing (WDM) is a technology for increasing the transmission capacity of optical fiber communications by sending multiple data channels simultaneously through a single fiber, ...



Each data stream is first converted into pulses of laser light, with each stream assigned a unique, precise wavelength, comparable to assigning a specific radio frequency to each radio station. ...



What is Wavelength Division Multiplexing (WDM)?
Wavelength Division Multiplexing (WDM) is a technique in fiber-optic communication systems that enables multiple optical signals with different ...



Here, we develop a novel design approach that co-optimizes inverse-designed wavelength division multiplexers and distributed Bragg gratings to achieve ultra-low crosstalk without compromising ...

Contact Us

For more information, pricing, or custom energy solutions, please contact us:

Website: <https://www.gdroofing.co.za>

Email: sales@gdroofing.co.za

Phone: +27 72 418 9365

Address: 22 Electron Avenue, Isando, Johannesburg, 1600, South Africa

This document is for informational purposes only. Specifications subject to change without notice.

