

Function of a common-enclosure type electrical distribution box



Function of a common-enclosure type electrical distribution box



Type 1: Enclosures constructed for indoor use to provide a degree of protection to personnel against access to hazardous parts and to provide a degree of protection of the equipment inside the ingress ...



An electrical distribution box is a standardized enclosure that accepts incoming power from a feeder and allocates it to multiple branch circuits under defined protective and isolation requirements.



Distribution Boxes: The most common type, used to deliver electrical power from the main supply to individual circuits in homes, offices, or factories. These boxes include fuses or circuit ...



A distribution boxes is an essential device that safely and efficiently distributes electrical power to different areas within a building or facility. It is commonly used in homes, businesses, and ...



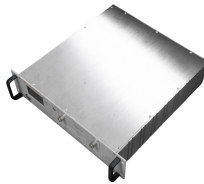
It acts as a protective enclosure that houses several key components, such as circuit breakers, fuses, and bus bars. These components work together to prevent electrical faults, such as ...



In the United Kingdom, BS 7671 defines a consumer unit as "A particular type of distribution board comprising a type tested coordinated assembly for the control and distribution of electrical energy, ...



Electrical control panels and distribution boxes are the backbone of modern electrical systems. From powering homes and industrial facilities to supporting medium-voltage infrastructure, ...



A distribution box (distribution board/DB box) distributes incoming power to multiple circuits and typically houses protective devices such as breakers and optional leakage/surge protection.



It helps protect, control, and distribute electricity safely in industrial, commercial, and renewable energy applications. Simply put, a distribution cabinet is an enclosure that contains circuit ...



A Distribution Box, commonly known as a DB Box, serves as the central point for safely distributing electrical power from a main supply to multiple downstream circuits.

Contact Us

For more information, pricing, or custom energy solutions, please contact us:

Website: <https://www.gdroofing.co.za>

Email: sales@gdroofing.co.za

Phone: +27 72 418 9365

Address: 22 Electron Avenue, Isando, Johannesburg, 1600, South Africa

This document is for informational purposes only. Specifications subject to change without notice.

