

General Assembly Box Standard Requirements



Overview

0 All boxes shall conform to the latest edition of the National Electrical Code (NEC) NFPA70 and the applicable NEMA Standards. In this guide, we'll break down everything you need to know about IPC-A-630: what it covers, how it fits with other IPC standards, and how to implement it in your box build operations. What is IPC-A-630?

IPC-A-630 is an industry-consensus standard that establishes acceptability requirements for. Follow U. Postal Service ® guidelines for installing and placing a new mailbox at your home. Make sure that your mail carrier always has a clear path to your mailbox whether it's by the street. Metal raceways, cable armor, and other metal enclosures for conductors shall be metallicity joined together into a continuous electric conductor and shall be so connected to all boxes, fittings, and cabinets as to provide effective electrical continuity. No wiring systems of any. IPC-A-630, "Acceptability Standard for Manufacture, Inspection, and Testing of Electronics Enclosures," often referred to as "the box build standard," was released in 2013 as the first acceptability standard for electronic enclosures. This international standard provides requirements

for. GENERAL SCOPE This section includes Pre-fabricated metallic boxes and assemblies Metallic outlet boxes, device boxes, rings and covers Non-metallic outlet boxes, device boxes, rings and covers While-in-use and weatherproof outlet boxes and covers. Junction boxes and pull boxes Related sections: 01. If you have any questions about IEC copyright or have an enquiry about obtaining additional rights to this publication, please contact the address below or your local IEC member National Committee for further information.

General Assembly Box Standard Requirements



In this guide, we'll break down everything you need to know about IPC-A-630: what it covers, how it fits with other IPC standards, and how to implement it in your box build operations.



The classification scheme in this standard meets the intent of the International Energy Conservation Code (IECC) and covers boxes installed in walls, ceilings, and floors where an air barrier is required.



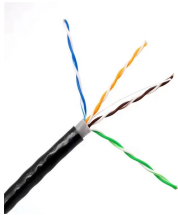
A mailbox with the Postmaster General's (PMG) seal of approval meets USPS size and construction standards. If you build your own mailbox or buy a custom-made one, it must meet the PMG standards.



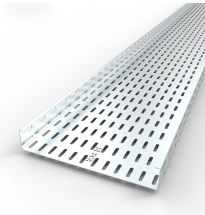
The following engineering specifications and standards are provided to the public to convey the U.S. Postal Service's requirements for various delivery and collection equipment.



This international standard provides requirements for manufacturing, inspecting, and testing electronic enclosures. An electronic enclosure, or "box," has also been called a chassis, top-level assembly, ...



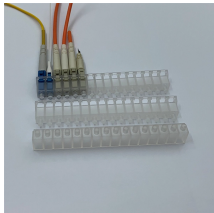
This section should be carefully reviewed and edited by the Architect or Engineer to meet the requirements of the project and local building code. Coordinate this section with other specification ...



A box or an enclosure which is an integral part of an electrical accessory and provides protection for that accessory against external influences (for example mechanical impact, ingress of solid objects or ...



Boxes and covers shall be installed with stainless steel nuts, bolts, screws, washers, etc. Boxes shall be galvanized after fabrication. Junction and pull boxes used in wet or corrosive locations shall meet ...



Complete enclosure. Boxes shall provide a complete enclosure for the contained conductors or cables.

Contact Us

For more information, pricing, or custom energy solutions, please contact us:

Website: <https://www.gdroofing.co.za>

Email: sales@gdroofing.co.za

Phone: +27 72 418 9365

Address: 22 Electron Avenue, Isando, Johannesburg, 1600, South Africa

This document is for informational purposes only. Specifications subject to change without notice.

