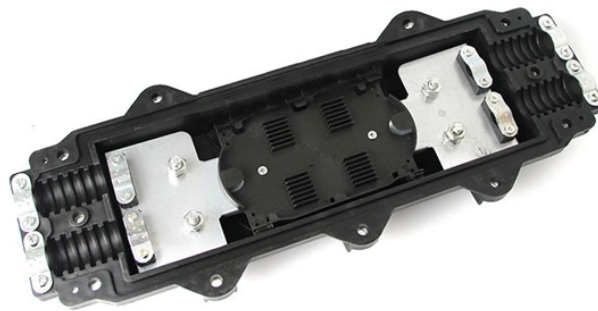


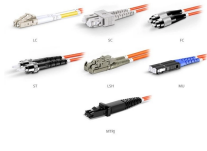
Grounding method for distribution box ground wire




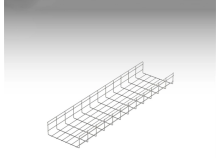
Overview


26 mm² (10 AWG) ground wire must be used, and in all other markets a 6 mm² must be used. On the US market, a 5. Power from factory ground must be installed by a qualified electrician. Grounding of the units: Attach a ground wire from one of. The correct connection method of Distribution box grounding wire mainly includes the following steps: 1. This position is the connection point of the grounding wire in the. Grounding is a mechanism to protect distribution equipment and people under normal operating conditions, abnormal operational (overcurrent and overvoltage) responses, and hazardous conditions such as shocks. Grounding is necessary to assure correct operation of electrical devices, to assure safety. Whether you're a seasoned pro or just starting out, this comprehensive guide will give you practical insights into proper grounding techniques, with a special focus on how selecting quality materials from a reliable building material supplier impacts your entire system's safety and longevity. The specific neutral grounding method chosen by the utility can have significant impacts on reliability of service, safety, protection coordination, power.


Grounding method for distribution box ground wire

 <p>OM1 Fiber Patch Cable Family</p>	<p>Changing neutral grounding method on some or all of the network has been shown to provide reliability benefits in some scenarios, based on documented international experience.</p>
---	--

	<p>Whether you're a seasoned pro or just starting out, this comprehensive guide will give you practical insights into proper grounding techniques, with a special focus on how selecting quality materials ...</p>
---	--

 <p>Grid Cable for marine and offshore applications</p>	<p>All incoming and outgoing ground wires, along with the box's pigtail, must be tightly joined together using a correctly sized wire nut or approved connector. This forms a single grounding ...</p>
---	--

	<p>It is recommended to ground the neutral at various strategic locations in distribution substations, overhead lines and underground cables, distribution transformers, and all loads.</p>
---	---

	<p>The correct connection method of Distribution box grounding wire mainly includes the following steps: 1. Find the grounding bar or PE bar Open the ...</p>
---	---



In power systems, grounding is an important safety measure that protects equipment and personnel from electric shock. However, with plastic distribution boxes, the grounding process can ...



Each DISTRIBUTION BOX and controller must be grounded. On the US market, a 5.26 mm² (10 AWG) ground wire must be used, and in all other markets a 6 mm² must be used.



Grounding is not optional — it's required by the National Electrical Code (NEC) and is one of the most important safety systems in any home or building. The goal of electrical panel grounding ...



Effective grounding, or earthing, of the distribution system neutral is necessary to achieve several objectives, the most important of which is the safety of the public and utility personnel.



The correct connection method of Distribution box grounding wire mainly includes the following steps: 1. Find the grounding bar or PE bar Open the distribution box and find the position ...



These grounding systems typically consist of ground rods or plates that are attached to the structure. Electrical fault currents and lightning strikes can be safely dissipated into the earth with the ...

Contact Us

For more information, pricing, or custom energy solutions, please contact us:

Website: <https://www.gdroofing.co.za>

Email: sales@gdroofing.co.za

Phone: +27 72 418 9365

Address: 22 Electron Avenue, Isando, Johannesburg, 1600, South Africa

This document is for informational purposes only. Specifications subject to change without notice.

