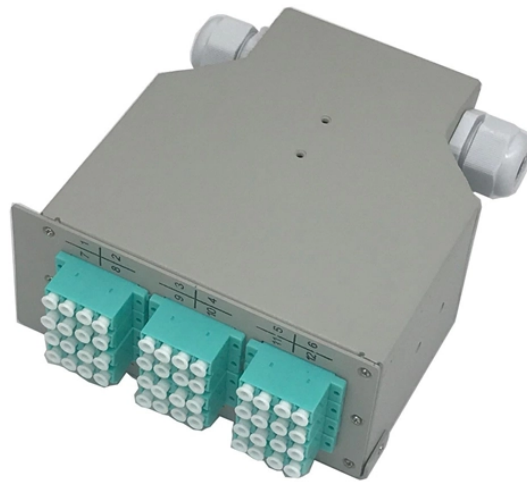


# Gyta53 Double Armored Double Sheathed Underground Optical Cable Manufacturer

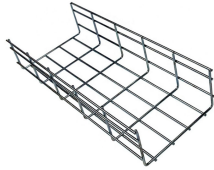


## Overview

Direct buried cable can be buried directly into the ground in a trench or using a vibratory plow. Except for with great water-blocking and moisture-proof performance, it also has good crushing and mechanical performance. With metallic centr. Direct buried cable can be buried directly into the ground in a trench or using a vibratory plow. Except for with great water-blocking and moisture-proof performance, it also has good crushing and mechanical performance. With metallic central strength members, it offers ease of location while dielectric design eliminates grounding issues. Duct cables are typically buried, and then the cables are air-blown, jetted, pulled or pushed into the duct. It features high tensile strength and excellent waterproof protection. Usually armored cables are installed under floors in data centers or in rocky soil, as well as to prevent rodent penetration. Aerial Cables are for outside installation on poles where consideration must be given to continual tension from the cable weight as well as wind and ice loads. It can be helically lashed to a messenger or another cable. Self-supporting cables

use special hardware to handle the installed tension on the cables caused by the weigh. Good mechanical and temperature performance Stranded loose tube improves the tensile strength Metal strength member provides excellent strain performance Double-jacket structure ensures moisture resistance and crush resistance Steel tape and aluminum tape enhances water-blocking & moisture-proof performance PE or AT sheath ensures safety of c. Used for duct and buried laying method Adopted to outdoor distribution Specially used where good mechanical performance and rodent resistance are expected.

## Gyta53 Double Armored Double Sheathed Underground Optical Cab



Deploy robust fiber networks underground with our GYTA53 Direct Buried Fiber Optic Cable. Featuring a Double Jacket (PE) and Double Armor (Aluminum + Steel) construction, this cable offers superior ...



Durable 24-core GYTA53 fiber optic cable with double armor for direct burial. Features water-blocking gel, rodent protection, and high-capacity communication.



GYTA53 fiber optic cable is specifically designed for direct burial and outdoor applications. It features a steel tape armor for enhanced protection. This type of cable is suitable for long-distance ...



Explore the details, specifications and video of our GYTA53 Fiber Cable 24 Core, and order high-quality GYTA53 Fiber Cable 24 Core from our factory directly at ...



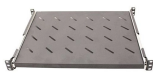
The direct buried structure of GYTA53 fiber optic cable is to put single ...



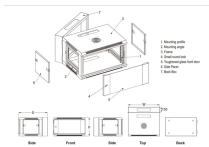
Explore the details, specifications and video of our GYTA53 Fiber Cable 24 Core, and order high-quality GYTA53 Fiber Cable 24 Core from our factory directly at competitive pricing.



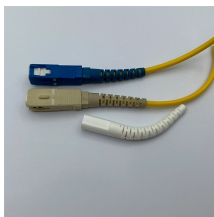
The direct buried structure of GYTA53 fiber optic cable is to put single-mode OS2 or multi-mode fiber into PBT loose tube. The center of the cable is a metal strength member.



Designed for 2 to 144 fibers, the cable uses G652D single mode fibers housed in high-strength loose tubes filled with hydrolysis-resistant compounds. The loose tube and filler arrangement maintains ...



GYTA53, GYTY53 direct buried optical cable features robust steel tape armor and moisture barriers, ensuring durability and performance in underground ...



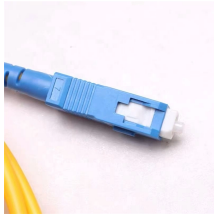
Inquiry Detailed Description Product Name GYTA53 Model Armored and Double Sheathed Outdoor Cable Number O005



GYTA53 is a heavy-duty double-armored, double-sheathed outdoor fiber optic cable designed for extreme environments. It features dual-layer aluminum-polyethylene laminated tape armor and ...



With metallic central strength members, it offers ease of location while dielectric design eliminates grounding issues. Duct cables are typically buried, and then the cables are air-blown, jetted, pulled or ...



GYTA53, GYTY53 direct buried optical cable features robust steel tape armor and moisture barriers, ensuring durability and performance in underground and high moisture ...

## Contact Us

For more information, pricing, or custom energy solutions, please contact us:

Website: <https://www.gdroofing.co.za>

Email: [sales@gdroofing.co.za](mailto:sales@gdroofing.co.za)

Phone: +27 72 418 9365

Address: 22 Electron Avenue, Isando, Johannesburg, 1600, South Africa

This document is for informational purposes only. Specifications subject to change without notice.

