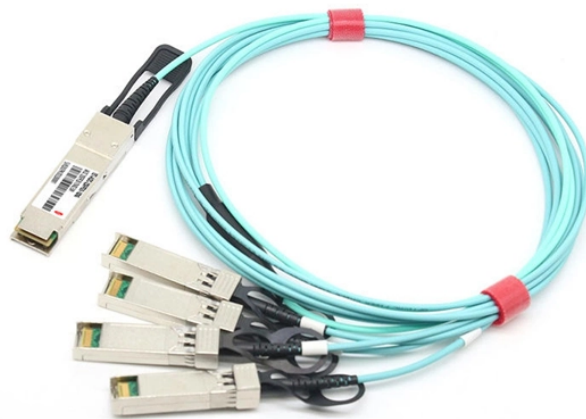


H3C Switch VLAN Port Aggregation



Overview

To enable traffic from VLAN 10 and VLAN 20 to pass through Layer 2 aggregate interface Bridge-aggregation 1, perform the following tasks:

- Configure Layer 2 aggregate interface Bridge-aggregation 1 as a trunk port. The configuration examples in this document were created and verified in a lab environment, and all the devices were started with the factory default configuration. When you are working on a live network, make sure you.
- Add the specified port to the current VLAN
- Configure the link type of the port as Trunk type
- Allow the specified VLAN to pass through the current Trunk port
- Set the default VLAN for the trunk port
- Configure the link type of the port as Hybrid
- View the VLANs that exist on the current switch
- View the. 08-08-2018 01:56 AM - edited 03-08-2019 03:51 PM i have configured H3C S7506E core Switch port channel as below and cisco switch but the link down down. Cisco Switch port channel as normal int rang t1/0/1-2 swi mod trunk swi trunk native vlan 10 channel-group 1 mode active int po1 swi mod trunk. Copyright © 2014 Hangzhou H3C Technologies Co. Create the VoIP access (trunk) ports for all access ports that will have phones attached. VLAN 10 will be the untagged native VLAN. If they. H3C S3100 Series Ethernet Switches Chapter 1 VLAN

Overview.

H3C Switch VLAN Port Aggregation



Ready to optimize your network management? Explore our comprehensive guide to H3C device switch commands. Upgrade your skills and browse Router Switch for top-notch products now. ...



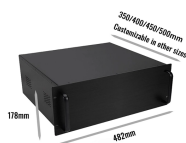
When aggregating ports, the system automatically assigns each port an operational key based on port information, such as port rate and duplex mode. Any change to this information triggers a ...



To forward the traffic in specific VLANs out of a fixed port on an aggregate link, specify those VLANs as management VLANs and specify that port as a management port.



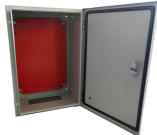
The authentication port (UDP) used by RADIUS servers is 1812 according to standard RADIUS protocols. However, the port (UDP) is set to 1645 on an H3C device that functions as the ...



This video features the VLAN configuration of a Switch H3C S5120V3-28S- » EQUIPMENT LIST: • Switch - H3C S5120V3-28S-HPWR-LI.



i have configured H3C S7506E core Switch port channel as below and cisco switch but the link down down. interface Bridge-Aggregation1 port link-type trunk port trunk permit vlan all port trunk ...



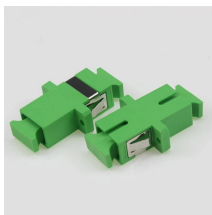
Ready to optimize your network management? Explore our comprehensive guide to H3C device switch commands. Upgrade your skills and ...



Operation Manual (For Soliton) - VLAN H3C S3100 Series Ethernet Switches Chapter 1 VLAN Overview An access port can be assigned to only one VLAN, ...



Operation Manual (For Soliton) - VLAN H3C S3100 Series Ethernet Switches Chapter 1 VLAN Overview An access port can be assigned to only one VLAN, while a hybrid or trunk port can be assigned to ...



Configure link aggregation on Device A and Device B to meet the following requirements: · VLAN 10 on Device A can communicate with VLAN 10 on Device B. · VLAN 20 on Device A can communicate ...

Contact Us

For more information, pricing, or custom energy solutions, please contact us:

Website: <https://www.gdroofing.co.za>

Email: sales@gdroofing.co.za

Phone: +27 72 418 9365

Address: 22 Electron Avenue, Isando, Johannesburg, 1600, South Africa

This document is for informational purposes only. Specifications subject to change without notice.

