

## Haiti door-to-door industrial switch 10G



## Haiti door-to-door industrial switch 10G



The LNP-1002G-10G-SFP-24 are IP30 rated and DIN-rail mountable. These Ethernet switches are designed to be powered with low voltage input (12~55VDC) while still providing the higher voltages ...



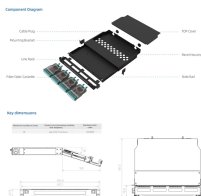
Our rugged 10G switches provide reliable performance for critical industrial networks. Equipped with advanced features like VLAN, QoS, link aggregation, and redundancy, these ruggedized 10G ...



Featuring a 10Gbps uplink, the IGS-1000-8T4X is suitable for connecting to an industrial backbone or high-capacity servers. Operating flawlessly across an extensive temperature range, it guarantees a ...



FS 10G Industrial Ethernet Switches: 10G Uplinks. Designed for Rugged Conditions. Industrial-Grade Connectivity. Shock & Vibration Resistant.



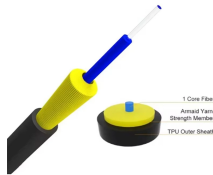
We're currently using an Antaira LNP-1002G-10G-SFP switch in a custom enclosure with other electronics. When we selected this, from what we could find it was the smallest switch that met our ...



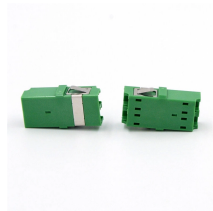
The ruggedized industrial managed 10G Ethernet switches support Dual Device mode that enables the 10G/Mi to operate as two independent and isolated Ethernet switches.



CTC Union is high-quality Industrial 10G Switch, 24x GbE RJ45 + 4x 100/1000 SFP + 4x 1G/2.5G/10G SFP+ Managed Rackmount Switch manufacturer from Taiwan since 1993.



With its 28 ports (4x 10GBase-X SFP+ slots, 24x 10/100/1000Base-T PoE+ ports according to IEEE 802.3at) this switch is suitable for cabling larger units in industrial environments as well as for in ...



Featuring a 10Gbps uplink, the IGS-1000-8T4X is suitable for connecting to an industrial backbone or high-capacity servers. Operating flawlessly across an extensive temperature range, it guarantees a ...



The NETGEAR XS708T is a powerful Smart Switch that comes with 8 ports of 10-Gigabit Copper connectivity, with 2 shared Combo Copper/SFP+ Fiber ports for 10G Fiber links.

## Contact Us

For more information, pricing, or custom energy solutions, please contact us:

Website: <https://www.gdroofing.co.za>

Email: [sales@gdroofing.co.za](mailto:sales@gdroofing.co.za)

Phone: +27 72 418 9365

Address: 22 Electron Avenue, Isando, Johannesburg, 1600, South Africa

This document is for informational purposes only. Specifications subject to change without notice.

