

High ground current in the distribution box



High ground current in the distribution box



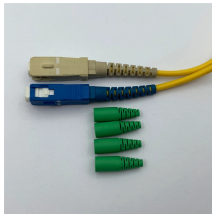
So, when you place modern electronic loads in a building with an older electrical distribution infrastructure, imbalances between the phases occur, higher than expected current will travel down ...



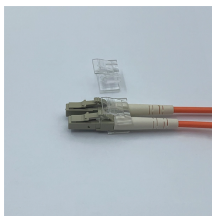
But a common question arises: Can power distribution boxes handle high currents? This article delves into the technical and practical aspects of this question, offering expert insights from Farady's ...



Earth is a direct physical connection to the Earth. This is usually done by driving a copper rod (earth stake) into the ground. But, depending on age and location of the system this can also be a copper ...



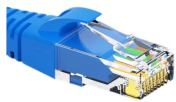
High-Resistance Grounding (HRG): To provide a safe amount of ground fault current, HRG systems employ a high-resistance grounding resistor. This approach keeps the system running even when ...



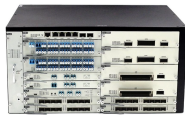
If the “UP” current is higher, that grounding point should be inspected in order to check if there is any deterioration or damage that must be repaired. In ...



The concept is a simple one: provide a path for ground current via a resistance that limits the current magnitude, and monitor to determine when an abnormal condition exists. This provides for maximum ...



This paper is intended to give an overview of the various relationships between neutral currents, ground currents, electrode impedances and voltage potentials that are encountered in the grounding of ...



The fact that a solidly-grounded system supports a large ground current trip current is an important characteristic of this type of system grounding and does affect the system design. Statistically, 90 ...



Ground faults on these systems may produce high-magnitude currents that require tripping the entire circuit and interrupting load to many customers. About 80 percent of ground faults occurring on ...



Whether you're a seasoned pro or just starting out, this comprehensive guide will give you practical insights into proper grounding techniques, with a special focus on how selecting quality materials ...

Contact Us

For more information, pricing, or custom energy solutions, please contact us:

Website: <https://www.gdroofing.co.za>

Email: sales@gdroofing.co.za

Phone: +27 72 418 9365

Address: 22 Electron Avenue, Isando, Johannesburg, 1600, South Africa

This document is for informational purposes only. Specifications subject to change without notice.

