

## Horizontal bends and right angles of cable trays



## Horizontal bends and right angles of cable trays



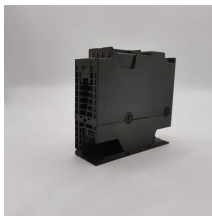
This bend provides a 45° angle bend when connecting cable tray sections.



We specialize in the manufacture of Tailor-Made Cable Tray Systems, confirming to Stringent National / International Standards, to the exact needs of the customer.



Different types of bends are essential to navigate obstacles, optimize space, and ensure the smooth and safe routing of cables in complex layouts. In this blog, we'll explore the various types ...



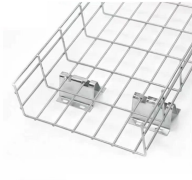
90° bend, horizontal, for all cable tray types of 50 mm side height. Including appropriate fastening material.



Eaton B-Line series horizontal bend, 4" H x 19.5625" W x 9" L, Aluminum, 12" radius, 90° angle, Horizontal bend



Explore Aparna Rollform's range of horizontal bends for cable trays, which includes left and right versions. To ensure effective and well-organized management of electrical wiring in commercial and ...



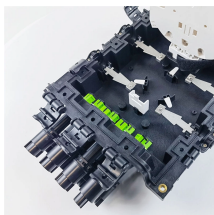
Calculate horizontal, vertical, or compound cable tray offsets based on bend angle, offset distance, and available installation space. Use this tool to estimate sloped section length, horizontal run ...



The document provides instructions for forming various bends and joints in electrical trunking and cable trays. It describes: 1) How to mark and cut a right-angle ...



Shop Cope fiberglass adjustable tray bends for customizable cable routing.



The document provides instructions for forming various bends and joints in electrical trunking and cable trays. It describes: 1) How to mark and cut a right-angle internal bend in a section of trunking, ...



Manufacturer offers factory bends 30 degrees to 90. We are installing tray around a clarifier at a WWTP and about every 20 feet we need around 10 degrees of bend.

## Contact Us

For more information, pricing, or custom energy solutions, please contact us:

Website: <https://www.gdroofing.co.za>

Email: [sales@gdroofing.co.za](mailto:sales@gdroofing.co.za)

Phone: +27 72 418 9365

Address: 22 Electron Avenue, Isando, Johannesburg, 1600, South Africa

This document is for informational purposes only. Specifications subject to change without notice.

