

How can I connect a fiber optic cable to a switch



How can I connect a fiber optic cable to a switch



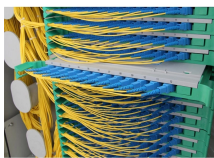
Whether you are upgrading your network or setting up a new one this step by step tutorial will help you make the right choices.



In cases where the distance between switches exceeds the total cable length, you can use the LC-LC coupler to connect two fiber optic cables together. For example, insert the connector ...



Set your fiber optic-to-Ethernet converter box in a location near your Ethernet switch and plug in its power adapter. Insert the end of your fiber optic network line into ...



The main advantage is that you can pull the cable through small holes and then attach the connector on the end yourself (the crimp and plugs are cheap and simple to do, just practice on ...



Ensure it's securely connected. Connect the fiber optic cable: Attach the fiber optic cable's connector to the transceiver module on the switch. Make sure the connector type (e.g., SC, LC) ...



By following these steps and considerations, you can effectively connect a switch to a fiber optic network, ensuring high-speed and reliable data transmission. Fiber optics offer significant ...



Fiber optic cables offer unparalleled speed and reliability, making them a popular choice for connecting to Ethernet networks. However, connecting fiber optic cable to Ethernet...



Follow NSComm installation guide to achieve high-speed, low-loss fiber connections. Learn fiber optic types, materials, and installation best practices.



Choose an SFP module based on the fiber optic cabling that will be connected to the network switches. SFP transceiver modules almost always require two fiber optic cable strands.



Most modern fiber-enabled network switches require an SFP transceiver module featuring a duplex (two strand) multimode OM3 or duplex single mode OS2 connection with LC connectors. Direct attach ...



Set your fiber optic-to-Ethernet converter box in a location near your Ethernet switch and plug in its power adapter. Insert the end of your fiber optic network line into the fiber...

Contact Us

For more information, pricing, or custom energy solutions, please contact us:

Website: <https://www.gdroofing.co.za>

Email: sales@gdroofing.co.za

Phone: +27 72 418 9365

Address: 22 Electron Avenue, Isando, Johannesburg, 1600, South Africa

This document is for informational purposes only. Specifications subject to change without notice.

