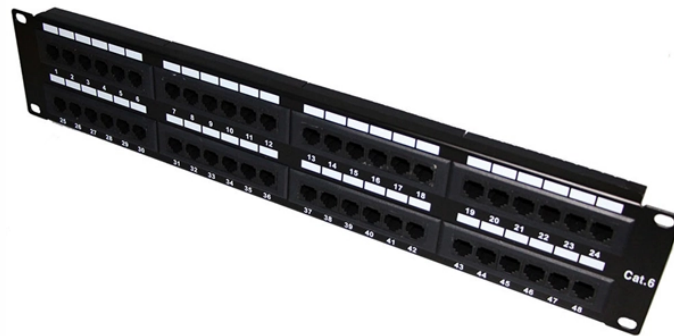


How is a network expansion rack represented



Overview

The rack itself: Often represented as a rectangle or square, with numbered or labeled rack units (U) to indicate the vertical height. A rack elevation diagram is a visual representation of the equipment and components contained within a rack in a data center or server room. It provides a clear overview of the physical layout of the rack, including the placement and positioning of servers, switches, storage devices, and other. Whether you're managing a server room, designing a network operations center (NOC), or implementing sophisticated AV systems, one critical tool stands at the foundation of successful deployment: the rack elevation diagram. Crafted from durable metal, its primary role is to securely house and systematically organize a variety of networking devices.

How is a network expansion rack represented



What Is A Networking Rack?Types and Dimensions of Networking RacksUnderstanding Rack Units: The “U” MeasurementEnhancing Rack Functionality with AccessoriesSpecialized Rack SolutionsA networking rack, often referred to as an equipment rack, stands as a foundational component in the realm of network infrastructure. Crafted from durable metal, its primary role is to securely house and systematically organize a variety of networking devices. This setup is designed for "rack-mountable" equipment, a category that includes essential...See more on networkencyclopedia wirecrafted



An expansion rack contains power distribution units (PDUs) and networking components to integrate the additional physical resources with the base rack. This rack does not include storage ...



With our Server Rack Diagram Template, you can easily create a helpful guide on how to set up your rack. Follow the export and mount your network rack hardware accordingly.



Each device is represented by a rectangular shape, with details such as device name, manufacturer, model number, and other relevant information included. The diagram may also include additional ...



A networking rack, often referred to as an equipment rack, stands as a foundational component in the realm of network infrastructure. Crafted from durable metal, its primary role is to ...



Learn how to create a server rack elevation diagram to effectively organize and manage your network infrastructure. Get tips and best practices for designing your rack layout.



When evaluating server rack sizes, three dimensions dominate the conversation: rack height, rack width, and rack depth. Each dimension influences how well your equipment fits, how efficiently you can ...



In summary, rack diagrams serve as a visual aid in documenting, planning, troubleshooting, and managing network racks and devices. They provide a clear and organized representation of the ...



Network server racks are the backbone of any data center, providing the structural framework that houses servers, switches, and all vital networking equipment. This guide covers every aspect—from ...



In this guide, you'll learn how to create rack diagrams that are accurate, scalable, and easy to maintain—so you can plan smarter, troubleshoot faster, and keep your infrastructure organized.



A rack elevation diagram (also known as a rack elevation drawing or rack layout diagram) is a detailed visual representation that displays the precise vertical placement of equipment ...

Contact Us

For more information, pricing, or custom energy solutions, please contact us:

Website: <https://www.gdroofing.co.za>

Email: sales@gdroofing.co.za

Phone: +27 72 418 9365

Address: 22 Electron Avenue, Isando, Johannesburg, 1600, South Africa

This document is for informational purposes only. Specifications subject to change without notice.

