

How many circuits should a household distribution box have



Overview

The circuit breaker switch in the household distribution box depends on the area of the owner's house in the community. There are 5/6 circuits for ordinary single apartments, 7/8 circuits for small apartments, about 10 circuits for large apartments, and more for villas. Let us look at the. A 2,000 sq ft home typically needs 20-25 circuits minimum; a 3,000+ sq ft home may need 35-45. However, no matter how large. What size distribution box do you need for a house?

How do you know which circuit breaker to use?

Can you add more breakers later?

Why do you need GFCI or AFCI breakers?

Choosing the right size and setup for your distribution box keeps your electrical system safe and working well. Just plug in your wattage and voltage—let it handle the decimals. You're not just calculating

numbers—you're designing a system that matches how you live.

How many circuits should a household distribution box have



The NEC doesn't specify a minimum total circuit count, but it does mandate specific circuits for specific purposes. When you add them all up for a modern home, the number is always more than ...



We'll delve into methods for ascertaining the quantity of circuits at your disposal and underscore the significance of maintaining an adequate number to cater to your household's ...



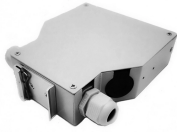
That's what happens when you overload circuits. But with some simple math and planning (don't worry, we'll walk through it!), you can design a system that works smoothly even when you're running all the ...



Choose the right size and setup for multiple circuit breakers in your distribution box to ensure safety, code compliance, and room for future upgrades.



Quick Answer: What Size Electrical Panel Do I Need? The right panel size depends on factors like your home's square footage, appliances, and future plans. For smaller homes, a 100-amp panel may ...



This article guides you through selecting a distribution box that is both affordable and safe, emphasizing key features, configuration, and practical considerations.



In the United States, most homes operate at 120 volts for standard circuits and 240 volts for larger appliances like ovens and HVAC systems. Electrical panels manage both 120V and 240V ...



Determine how many electrical circuits your house truly requires. Understand code mandates, calculate capacity, and map your existing panel.



Learn how to choose the right home distribution box with our expert guide. Compare circuit capacity, IP ratings, breaker types & avoid common mistakes.



The circuit breaker switch in the household distribution box depends on the area of the owner's house in the community. There are 5/6 circuits for ordinary single apartments, 7/8 circuits for small ...

Contact Us

For more information, pricing, or custom energy solutions, please contact us:

Website: <https://www.gdroofing.co.za>

Email: sales@gdroofing.co.za

Phone: +27 72 418 9365

Address: 22 Electron Avenue, Isando, Johannesburg, 1600, South Africa

This document is for informational purposes only. Specifications subject to change without notice.

