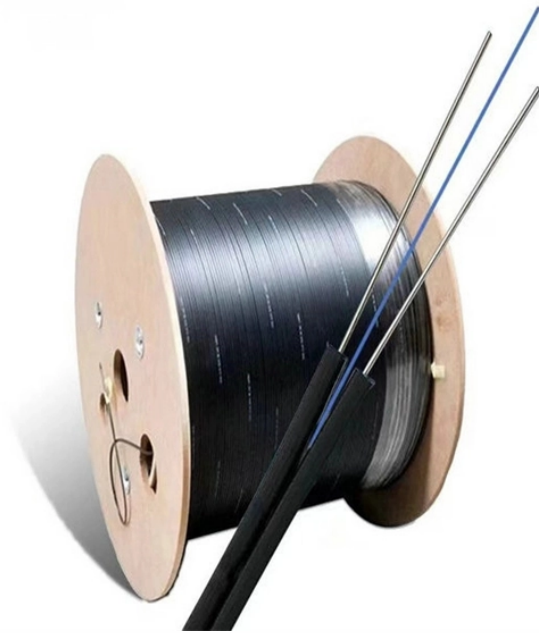


How many sockets should be installed in the distribution box for optimal use



Overview

Quick Answer: A 15-amp circuit can safely support up to 8 outlets under the electrician's 80% rule (technically up to 10 by raw math, but 8 is the safe practice standard). The National Electrical Code (NEC) serves as a benchmark for electrical installations, ensuring safety and functionality in residential and commercial settings. These numbers assume standard receptacles drawing an average of 1.5 amps. The closest guideline to how many outlets can you put on 15A, 20A, or 30A circuits is found in the NEC 210.21 Chapter titled 'Outlet devices'. In practice, this usually means 10-12 double plug sockets for most homes. But here's the thing - I've installed rings with 8 sockets that were overloaded, and others with 15 sockets that worked perfectly fine. 14 (I), a commercial convenience receptacle outlet is calculated at 180 volt-amperes (va) per single or multiple receptacles on one yoke.

How many sockets should be installed in the distribution box for op



Figure out how much wattage you'll require from each outlet and calculate the remainder to determine how much you have left to work with - and how many more outlets you should install on ...



So, how many outlets can you put on a circuit? In the UK, expect 10-12 double plug sockets on a typical ring circuit. In the US, the National Electric Code allows 8-10 outlets depending on your circuit ...



When you need to select an electrical enclosure for a building, one of the primary concerns is a concept known as box fill. This is a way to determine how many wires and devices can safely reside inside of ...



The most frequently asked and searched question from home owners and DIY dudes is what is the exact number of outlets, receptacles and sockets which can be installed on 15A or 20A circuit breakers.



One dedicated circuit for each "high load" appliance such as washing machine, dish-washer, cooker etc. Water heater and fixed heater units shall be connected by terminals (not socket ...



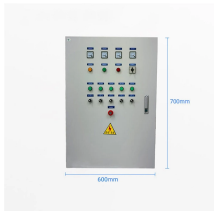
The closest guideline to how many outlets can you put on 15A, 20A, or 30A circuits is found in the NEC 210.21 Chapter titled "Outlet devices". This NEC chapter includes a table that specifies circuit ratings, ...



Electrical box fill calculator. Calculate maximum conductor capacity for any junction box according to NEC & CEC standards.



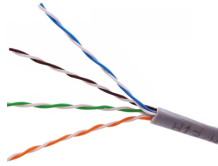
Electrical box fill calculator. Calculate maximum conductor capacity for any ...



Quick Answer: A 15-amp circuit can safely support up to 8 outlets under the electrician's 80% rule (technically up to 10 by raw math, but 8 is the safe practice standard). A 20-amp circuit can ...



We can install an unlimited number of outlets on that dwelling circuit. Let's look at the Code and clear up any confusion about why we really wouldn't install so many receptacles on one ...



How Many Outlets on A 15 Amp Circuit
How Many Outlets on A 20 Amp Circuit
How Many Outlets on A 30 Amp Circuit
A 15 amp circuit has the maximum amp draw of 12A, for a total wattage of 1,440W at 120V. Here is how many outlets you can put on a 15A breaker, given the average amps draw. We have also calculated how many watts can an individual outlet handle if all of them are powering electric devices at the same time: Practically, we apply the 1.5 amps per outl...See more on learnmetrics electricalfaultsfixed

Contact Us

For more information, pricing, or custom energy solutions, please contact us:

Website: <https://www.gdroofing.co.za>

Email: sales@gdroofing.co.za

Phone: +27 72 418 9365

Address: 22 Electron Avenue, Isando, Johannesburg, 1600, South Africa

This document is for informational purposes only. Specifications subject to change without notice.

