

How much does it cost to install an Alz distribution box



How much does it cost to install an Alz distribution box



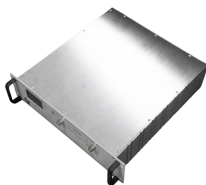
Key cost drivers include panel amperage, indoor vs outdoor location, wiring length, and whether a full panel upgrade or rerouting is needed. The article outlines cost ranges, per-unit pricing, ...



2026 residential electrical panel upgrade costs. Compare 100A, 200A, and 400A service pricing, installation times, ROI, and modern NEC code requirements.



Typical costs range from \$400 to \$4,400, with an average of about \$1,300. The final price depends on factors like amperage, box type, labor, and upgrades. Always check local rules and consider hiring a ...



Typical cost ranges for replacing a distribution box or service panel in the United States vary widely based on panel size, amperage, labor, and whether a full service upgrade is needed.



Check out our electrical work pricing guide to calculate the costs to install or repair light fixtures, outlets, switches, fans, electrical panels, and wiring.



Estimate your commercial electrical installation costs with our easy calculator. Get project-specific pricing based on type, size, location, and features.



See typical tasks and time to install an electrical service panel, along with per unit costs and material requirements. See professionally prepared estimates for electrical service panel installation work.



A qualified, licensed electrician is the best person for complicated jobs like replacing an electrical panel, installing new wiring, or adding or removing circuits. Find out how much an ...



This article outlines the cost factors, price ranges, and practical budgeting advice for a U.S. audience. The price depends on electrical code upgrades, permit needs, and whether upgrades require panel ...



Homeowners and contractors typically pay for distribution box replacement based on box type, amperage, and install complexity. The main cost drivers are the existing wiring layout, required ...

Contact Us

For more information, pricing, or custom energy solutions, please contact us:

Website: <https://www.gdroofing.co.za>

Email: sales@gdroofing.co.za

Phone: +27 72 418 9365

Address: 22 Electron Avenue, Isando, Johannesburg, 1600, South Africa

This document is for informational purposes only. Specifications subject to change without notice.

