

How much does it cost to measure and design a distribution box in the EU



Overview

Installing a new consumer unit costs on average between €450 and €800, depending on the number of groups you need. These costs include materials, labour, and 21% VAT. Replacing or expanding a new consumer unit ensures that your electrical installation is safe and future-proof, which is essential during renovations or if your current consumer unit. **WHAT IS THE COST OF INSTALLING A NEW DISTRIBUTION BOARD?**

The average cost of installing a new distribution board is typically between £300 and £500. Contact T Walsh Contracts today and we will visit your property. Distribution box cost encompasses various factors that influence the overall investment in electrical distribution systems. Cost and price factors determine total project.

How much does it cost to measure and design a distribution box in t



The average cost for a wall-mounted electric meter box ranges ...



We offer plastic distribution boards of various sizes. Intended for extension or distribution of cable lines. They can also be used as meter boxes. They are resistant to chemical agents, thermal and UV rays. ...



The cost breakdown below uses indicative ranges and common components for new panel box installations or upgrades. The table mixes totals with per-unit estimates to aid budgeting.



When you start looking for a distribution box, you'll quickly realize the price range is wider than a highway. You might find a small plastic unit for the price of a fancy dinner, or an industrial-grade ...



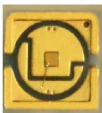
The average cost for a wall-mounted electric meter box ranges significantly depending on the type of material, size and additional features. Typically, you can expect prices to vary from ...



The average cost of installing a new distribution board is typically between £300 and £500. The final cost will depend on the particular setup and requirements of your property.



The average cost of installing a new distribution board is typically between £300 and £500. The final cost will depend on the particular setup and requirements of your ...



Learn the step-by-step process of customizing complete distribution boxes tailored to your needs. From requirement confirmation to design, production, and testing, find out how to get a ...



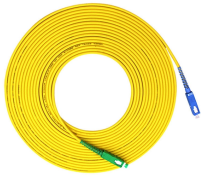
Installing a new consumer unit costs on average between €450 and €800, depending on the number of groups you need. These costs include materials, labour, and 21% VAT. The price is ...



After the manufacturing process, the distribution box is tested and marked with CE marking, and the customer is provided with the EU declaration of conformity. If necessary, we make electric cabinets ...



Designed and manufactured in Italy, the Euro2000 range of Distribution Boxes offer quality and reliability across the entire range. Suited for a wide variety of applications in the electrical engineering industry.



Explore the complete breakdown of distribution box costs, including safety features, scalability options, and operational benefits. Learn how to maximize your investment in electrical distribution systems.

Contact Us

For more information, pricing, or custom energy solutions, please contact us:

Website: <https://www.gdroofing.co.za>

Email: sales@gdroofing.co.za

Phone: +27 72 418 9365

Address: 22 Electron Avenue, Isando, Johannesburg, 1600, South Africa

This document is for informational purposes only. Specifications subject to change without notice.

