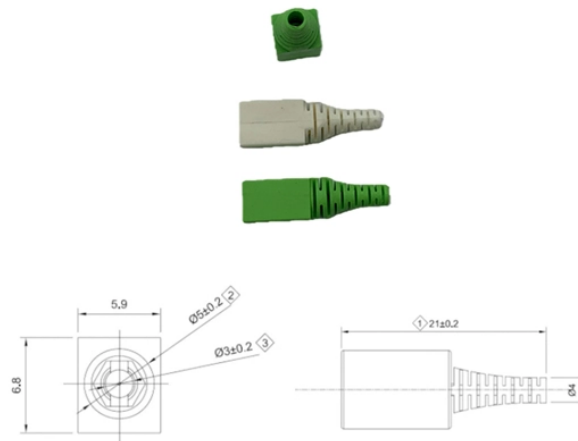


## How to Choose an Invisible Fiber Optic Cold Connector



## How to Choose an Invisible Fiber Optic Cold Connector



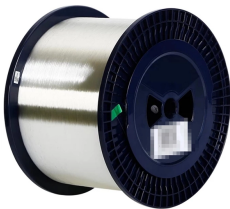
In terms of performance, Invisible Fiber Cable offers comparable speed, latency, and reliability to traditional fiber optic cables. Users can expect the same high-speed internet and low-latency ...



The connector has a pre-polished ferrule and an extra pre-cleaved fiber length (not a fiber stub inside the connector body). All you need to do is to strip your fiber and fuse it with the connector, protect the ...



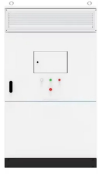
Explore our variety of fiber optic connector types designed to ensure reliable, trouble-free connections in your network. From LC, SC, ST and MTP/MPO connectors to ...



When selecting fiber fast connectors, evaluate insertion loss, return loss, fiber compatibility, operating environment, and total cost. For FTTH and CATV applications, SC/APC is the standard choice.



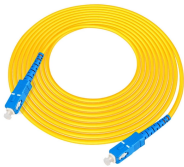
Explore our variety of fiber optic connector types designed to ensure reliable, trouble-free connections in your network. From LC, SC, ST and MTP/MPO connectors to specialized options such as FC and ...



Choosing the right connector based on application and environment is critical to maintaining stable network performance. In this article, we explain how fiber optic connectors work, their main types, ...



Choose the right fiber optic connector with our comprehensive type selection guide. Discover the features, benefits, and ideal applications of various connectors to make informed ...



Among these components, fiber connector types are essential to network performance, reliability, and scalability. This guide will walk you through the most common fiber connector types, ...



Discover the 8 essential fiber optic connector types (LC, SC, FC, etc.), their key advantages, and differences. Learn how PC, UPC, and APC polishes impact performance, and get ...



Although both connectors deliver reliable optical performance, they are designed for different priorities and deployment scenarios. This guide explains the practical differences between ...



In the ecosystem of optical fiber connectors, the SC and LC connectors are two of the most widely used types for creating reliable connections. Your choice directly impacts rack space efficiency, installation ...

## Contact Us

For more information, pricing, or custom energy solutions, please contact us:

Website: <https://www.gdroofing.co.za>

Email: [sales@gdroofing.co.za](mailto:sales@gdroofing.co.za)

Phone: +27 72 418 9365

Address: 22 Electron Avenue, Isando, Johannesburg, 1600, South Africa

This document is for informational purposes only. Specifications subject to change without notice.

