

How to Select the Right Type of Distribution Box for Coverage



Overview

Figuring out what you actually need is the first step in choosing the right Distribution Box. Think about things like how much load you expect, how many circuits you'll need, and the environment where the box will sit — all these details matter. This guide provides information on how to select the appropriate Distribution Box for Electric project. A distribution box, sometimes referred to as a panel board, distribution board, or breaker panel, is an. Basically, a Distribution Box acts as the hub where power from your utility company gets split up into different circuits. This way, your home or business can power multiple devices without risking overloads or sudden outages. Function: The MDB receives a high-voltage, high-amperage electrical supply and distributes it to. In this guide, we'll break down the 12 main types of distribution boxes in a way that's easy to understand. Plus, we'll sprinkle in some practical tips to make sure you're not. Whether you're planning a renovation, troubleshooting electrical issues, or simply want to understand your building's electrical infrastructure, knowing the basics can save you time, money, and potentially prevent safety hazards.

How to Select the Right Type of Distribution Box for Coverage



Discover the key types of distribution boxes with NUOMAK's comprehensive guide. Learn about Main Distribution Boards (MDB), Consumer Units, Transfer Switches, and more to choose the perfect ...



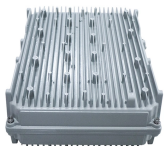
Our technical team can help you select the right panel type, calculate proper sizing, and ensure NEC 408 compliance for your specific application. Contact SYNODE for professional ...



This guide provides information on how to select the appropriate Distribution Box for Electric project. If you have any questions about distribution boxes, please feel free to contact us.



Distribution boxes are at the heart of safe and organized electrical systems—whether in residential, commercial, or industrial settings. But how do you choose the right one for your...



Choosing the best distribution box isn't rocket science, but it does need a bit of thought. I'll walk you through the key factors to consider, like your building size, budget, and environment.



Learn how to choose the right distribution box for your home or workshop. Discover sizing rules, component selection, and strict electrical safety standards.



This guide explores control panels, electrical boxes, breaker panels, bus bars, junction boxes, and custom enclosures to help you understand their sizes, types, and common applications.



This bar chart illustrates the key criteria for selecting the right distribution box based on various features such as rated current, number of circuits, ingress protection, size, and material.



Many experts say you should follow these steps: Make clear goals for your project. Look at your site and the wiring you have now. Plan your design to be safe and work well. Choose equipment that fits your ...



This guide provides a detailed, step-by-step approach to selecting the appropriate electrical boxes for various installations, ensuring both safety and compliance with the National Electrical Code (NEC).

Contact Us

For more information, pricing, or custom energy solutions, please contact us:

Website: <https://www.gdroofing.co.za>

Email: sales@gdroofing.co.za

Phone: +27 72 418 9365

Address: 22 Electron Avenue, Isando, Johannesburg, 1600, South Africa

This document is for informational purposes only. Specifications subject to change without notice.

