

How to adjust the brightness of the pigtail light



Overview

A potentiometer is a variable resistor that you can use to change the brightness of the LED. Another method is to turn the LED on and off. Backlit keyboards can be helpful while typing in low-light situations and can enhance the overall aesthetics of your setup. Read on to find the best method for your laptop or desktop keyboard. Some keyboards, like the Logitech G Pro desktop keyboard, will actually have a dedicated button. This guide explains how to turn keyboard lighting on or off on Windows 10 and Windows 11 computers, including laptops and external keyboards. Before troubleshooting, confirm your keyboard supports lighting. Below I'll explain the two options and show you circuits you. Bulb to Socket & Component to Connector Cross Reference Guide des spirales de raccord et des douilles Renvois ampoules/douilles et composants/connecteurs Guía de cables flexibles y adaptadores Referencias a bombillas/adaptadores y componentes/conectores NAPA® ECHLIN IGNITION, EMISSION, ENGINE.

How to adjust the brightness of the pigtail light



A complete DIY guide to safely replacing pigtail light sockets. Learn essential specs and the wiring process for a successful fix.



Pigtail lights are a versatile and essential component in various lighting applications. Understanding the calculations and considerations involved in their use is crucial for electrical engineers and technicians.



How to adjust the brightness of a backlit keyboard
On your keyboard, locate the keyboard backlight adjustment media keys. Note: Location of the keyboard backlight adjustment keys can vary. If media ...



Guide des spirales de raccord et des douilles.
Renvois ampoules/douilles et composants/connecteurs. Guía de cables flexibles y adaptadores. Referencias a bombillas/adaptadores y ...



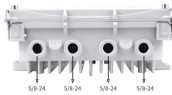
Don't let a melted headlight connector leave you in the dark. Find out how to replace the connector with a new headlight pigtail.



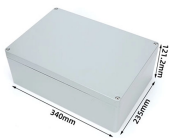
Do you want to adjust the brightness of your Light-Emitting Diode (LED)? If we break it down to the most basic, there are two ways to change the brightness of an LED:



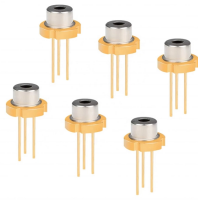
And this can include increasing or decreasing the brightness of your keyboard light or adjusting the settings so that the light stays on or off in sleep mode.



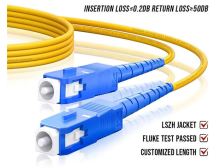
Press The Dedicated Button For Keyboard Backlighting
 Press The Increase Brightness Button
 Press The Assigned Function Key
 Use The Touch Bar
 Adjust It in Control Center Or Windows Mobility Center
 Use The Keyboard's Recommended Software, If Available
 Enable Keyboard Backlighting in The Bios
 Frequently Asked Questions
 Depending on the manufacturer and model of your device, you might be able to turn on and adjust the keyboard light via your PC's control panel menu. For certain MacBooks, that means opening Control Center, selecting Keyboard brightness, and then dragging its corresponding slider. This should work for some MacBook models that also run MacOS Monterey...
 See more on digitaltrends
 Author: Anita George
 Digital Citizen



Do you want to adjust the brightness of your Light-Emitting Diode ...



Tired of constantly adjusting your pigtail to keep your trailer lights from flickering? The Pigtail Wedge might be the solution you've been looking for.



The guide includes diagrams for adding lights to existing ceiling fixtures and using an existing wall outlet as the source for a new switch and light. Different wiring arrangements are ...



Keyboard backlighting makes it easier to type in low-light environments. Many laptops and external keyboards include built-in lighting, but the method to turn it on or off depends on your device brand ...

Contact Us

For more information, pricing, or custom energy solutions, please contact us:

Website: <https://www.gdroofing.co.za>

Email: sales@gdroofing.co.za

Phone: +27 72 418 9365

Address: 22 Electron Avenue, Isando, Johannesburg, 1600, South Africa

This document is for informational purposes only. Specifications subject to change without notice.

