

How to apply material to electrical cable trays



How to apply material to electrical cable trays



This guide covers the critical steps, from selecting the right electrical cable tray and performing accurate cable fill calculations to managing a safe cable pull through and ensuring all bonding and grounding ...



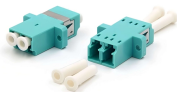
The guide draws on standards from NEMA, the National Electrical Code, and the Canadian Electrical Code to provide engineers and installers with best practices ...



Where cables enter and leave cable trays be sure that no sharp edges exist and trays will carry the weight of the cables. Check that no cables are subjected to any vibration or are in a position where ...



Learn how to choose the best cable tray system for your needs. Explore types, materials, installation tips, and NEC compliance in this expert guide.



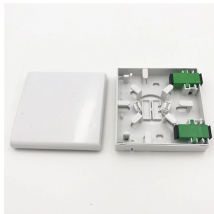
The guide draws on standards from NEMA, the National Electrical Code, and the Canadian Electrical Code to provide engineers and installers with best practices for implementing cable tray systems.



In designing supports for a cable tray system, consideration should be given to the loads associated with future cable additions and any additional loading that may be applied to the cable tray system (e.g., ...



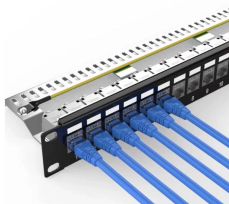
Mastering cable tray installation is crucial for creating a safe, organised, and efficient cable management system. By following this step-by-step guide, you can ensure a seamless setup that ...



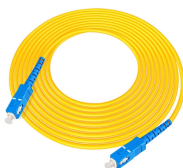
Learn how to choose the best cable tray system for your needs. Explore types, materials, installation tips, and NEC compliance in this expert guide.



This article explains the main requirements and good practices for cable tray systems, including tray types, materials, loading, supports, bonding, cable selection, and installation details.



Learn everything about cable tray installation with our complete guide. Discover types, steps, and safety tips for efficient electrical cable management.



Step-by-step cable tray and conduit installation method with safety, quality and inspection procedures as per IEEE standards.



Step-by-step instrumentation cable tray installation guide with safety tips, standards, inspections, and downloadable Excel checklist.

Contact Us

For more information, pricing, or custom energy solutions, please contact us:

Website: <https://www.gdroofing.co.za>

Email: sales@gdroofing.co.za

Phone: +27 72 418 9365

Address: 22 Electron Avenue, Isando, Johannesburg, 1600, South Africa

This document is for informational purposes only. Specifications subject to change without notice.

