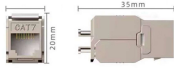


How to apply quotas for cable tray distribution



How to apply quotas for cable tray distribution



Cable tray quotation guide - Free download as PDF File (.pdf), Text File (.txt) or read online for free.



Cable tray sections must be in accordance with the cable types and/or the number of cables installed in it, respecting the maximum filling ratio, according to the cable tray type.



This guide covers the critical steps, from selecting the right electrical cable tray and performing accurate cable fill calculations to managing a safe cable pull through and ensuring all bonding and grounding ...



Learn how to correctly calculate conductor ampacity for single and multiconductor cables in cable trays per NEC 392.80, including derating for fill and configuration.



This article provides a comprehensive framework that governs various aspects of cable tray installations, including the types of cables that are deemed acceptable for use, requirements for ...



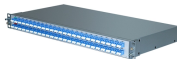
Cable tray length is selected based on the load to be supported, the distance between the supports (also referred to as the span), and handling and installation constraints.



Snake Tray has been designing and manufacturing cable trays (cable management systems), power distribution and enclosures since 1996! Our goal is to provide our customers with cost-effective ...



This article explains the main requirements and good practices for cable tray systems, including tray types, materials, loading, supports, bonding, cable selection, and installation details.



This calculator uses cable sizes and tray dimensions to produce a planning estimate of fill. Different tray types and standards use different calculation methods, so treat the result as a starting point and ...



There are a few types of cable trays including: solid-bottom trays, cable channel or trough trays, ventilated trays and ladder trays. There are a large number of cable tray fittings that are made ...



NEC Article 392 explains cable trays, their components, appropriate wiring methods for cable trays, and instances where they are and are not permitted for use. It also focuses on ...



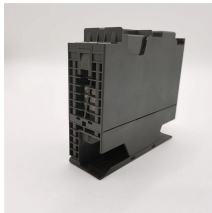
This issue of the CableGram presents questions and CTI answers to these questions that have been asked by interested persons and organizations concerning the application of cable tray systems.



Follow us on social media to get the latest product and support information.



Answer: Yes; cables are tied down in cable trays to keep the cables in the cable tray, to maintain spacing between cables, or to segregate or confine certain types of ...



You can still access products, invoices, quotes and more from anywhere with our CED Connect App. As a part of the greater CED family (dba Contractors Electrical Distributors), we specialize in supplying ...

Contact Us

For more information, pricing, or custom energy solutions, please contact us:

Website: <https://www.gdroofing.co.za>

Email: sales@gdroofing.co.za

Phone: +27 72 418 9365

Address: 22 Electron Avenue, Isando, Johannesburg, 1600, South Africa

This document is for informational purposes only. Specifications subject to change without notice.

