

How to arrange lights on cable trays



Overview

In this episode I discuss how we installed Collingwood high bay ufo style warehouse lighting. 5mm white FP 200 placed on to cable tray. All fixings are metal tie wrap. The cable . But before you lay the first tray or clamp down a single cable, you need a solid plan. Mark the cable tray route based on your electrical cable tray design and site. These simple tools, like cable clips and cable management boxes, can help secure loose cables and prevent them from tangling. Cable clips can be stuck to the edge of your desk or monitor to guide cables along a predetermined path. We must think about heat here as air does not move as freely. more In. Whether you're organizing a work-from-home setup or tidying up behind your entertainment unit, these clever home improvement items will make your space look clean and oh-so-satisfying.

How to arrange lights on cable trays



In this episode I discuss how we installed Collingwood high bay ufo style warehouse lighting.



Cable tray length is selected based on the load to be supported, the distance between the supports (also referred to as the span), and handling and installation constraints.



Under-desk cable organizers, such as cable trays or cable spines, can effectively hide and manage the cables that need to run from your desk to the floor. These organizers can keep your ...



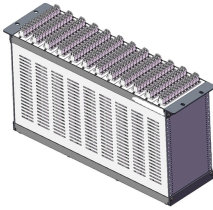
From sticky clips to under-desk trays, here are the best products for cable management that bring order to your tech mess. Check out now.



By adhering to these principles, E& I cable tray layouts can achieve the essential balance of safety, efficiency, and durability. A well-planned layout not only meets present requirements but also adapts ...



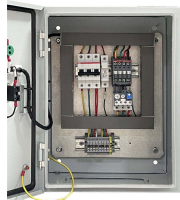
Learn about effective Cable Tray Design and Layout for electrical systems. Our guide covers planning, material choice, safety, and maintenance.



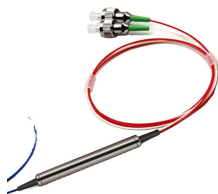
Learn about effective Cable Tray Design and Layout for electrical systems. Our guide covers planning, material choice, safety, and maintenance.



To help your home look exceptionally neat and organized, here's how to hide cords in every room—plus how to hide TV wires on the wall.



To ensure that the complete ladder tray wiring system performs as designed, it is important that it is properly installed. Personal injury as well as property damage will result if proper installation and ...



Cable trays are available in different configurations, straight sections are available to route cables in a horizontal or vertical plane. Fittings are available to route cables in various directions in either the ...



Learn everything about cable tray installation with our complete guide. Discover types, steps, and safety tips for efficient electrical cable management.

Contact Us

For more information, pricing, or custom energy solutions, please contact us:

Website: <https://www.gdroofing.co.za>

Email: sales@gdroofing.co.za

Phone: +27 72 418 9365

Address: 22 Electron Avenue, Isando, Johannesburg, 1600, South Africa

This document is for informational purposes only. Specifications subject to change without notice.

