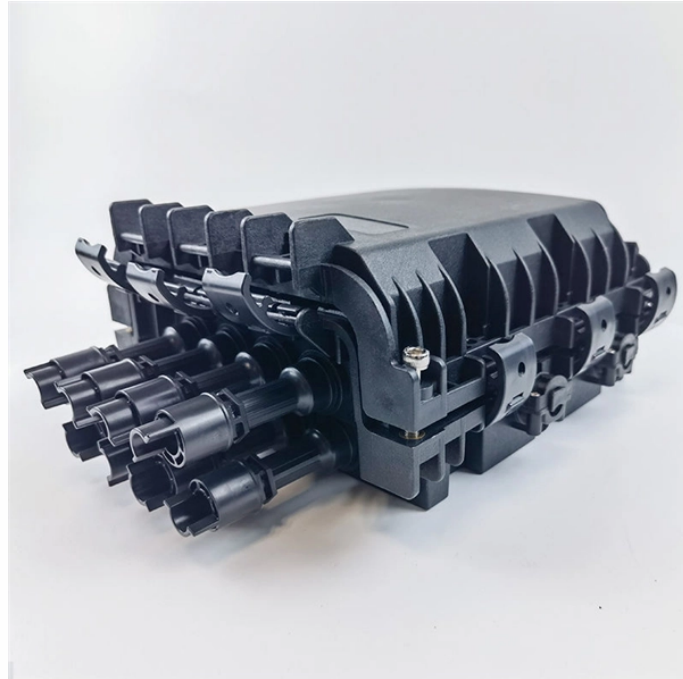


How to calibrate a TL-510 optical power meter



Overview

Once connected, turn on the optical power meter and let it warm up for a couple of minutes. Next, set your optical power meter to the color and power of the light. Model Introductions TL-510A: Measurement range: -70~+10dBm,calibrated wavelength□850nm□1300nm□1310nm□1490nm□1550nm□1625nm TL-510B: Measurement range: -50~+26dBm,calibrated wavelength□850nm□1300nm□1310nm□1490nm□1550nm□1625nm 2. Features High measurement accuracy and display resolution Quick. REF Relative power□Press REF for 2 seconds to 9. Function Keys ON/OFF□press ON/OFF to turn it on. Under power-on mode, 10-minute auto off function. It features a wide measurement range of -70 to +10dBm or -50 to +26dBm, six calibrated wavelengths, and high accuracy of $\pm 3\%$ (-10dBm, 22°C). Now the Ref. remove-circle Internet Archive's in-browser bookreader "theater" requires JavaScript to be enabled. We have 1 Tianlan TI-510 manual available for free PDF download: User Manual Tianlan TI-510 Pdf User Manuals.

How to calibrate a TL-510 optical power meter



So our product offers operators self-calibration function, the following steps will tell you how to do: Take out the batteries and pull up the switch 1 to "ON" position. Put the battery back to the battery ...



View and Download Tianlan TI-510 user manual online. Optical Power Meter. TI-510 measuring instruments pdf manual download.



Topics manualzilla, manuals, Collection manuals_contributions; manuals; additional_collections Item Size 3.8M Addeddate 2021-03-08 13:34:21 Identifier manualzilla-id-5797396 Identifier-ark ...



TL510 handheld Mini optical power meter is a compact and an easy-to-use testing instrument for optical fiber networks, which can be used for absolute optical power measurements as well as for relative ...



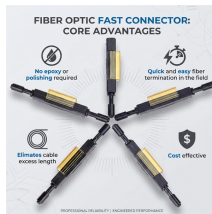
You can examine Tianlan TI-510 Manuals and User Guides in PDF. View online or download 1 Manuals for Tianlan TI-510. Besides, it's possible to examine each page of the guide singly by using the scroll ...



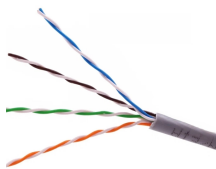
Using the common methods and tools mentioned in the step-by-step guide, you can keep your optical power meter accurate and reliable. Calibrating your equipment regularly is key ...



The TL-510 offers both absolute and relative power measurement modes, user self-calibration, low battery indication, and auto-off function for extended battery life.



Subscribed 2 524 views 3 years ago How to calibrate and Debugging Optical Power Meter...more



Save the reference value when enter the relative measurement mode, press REF for 2 seconds to save the current absolute power value as REF value and show the relative power value in dB unit



View online or download Tianlan TI-510 User Manual.

Contact Us

For more information, pricing, or custom energy solutions, please contact us:

Website: <https://www.gdroofing.co.za>

Email: sales@gdroofing.co.za

Phone: +27 72 418 9365

Address: 22 Electron Avenue, Isando, Johannesburg, 1600, South Africa

This document is for informational purposes only. Specifications subject to change without notice.

