

How to connect a fiber optic cable label changing machine



Overview

You don't need to twist the screws to adjust the machine, just input the label size and wire diameter directly on the display. The labeling effect is good, the labeling efficiency is high, the operation is convenient, and the material belt is easy to replace. Free up flagging time with the BradyPrinter A5500 Fiber Optic Flag Printer Applicator. Print durable, laminated wire labels with barcodes, text, and symbols on tapes designed for all datacom applications.



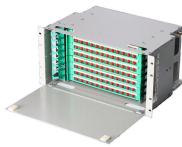
How to connect a fiber optic cable label changing machine



Once printed, the tube is opened up and passed over a cable or terminating connector. After heating, the tube will shrink to about half its original width, taking the shape of the cable or connector.



You don't need to twist the screws to adjust the machine, just input the label size and wire diameter directly on the display. The labeling effect is good, the labeling efficiency is high, the operation is ...



This article outlines a practical, industry-aligned process for labeling fiber optic cables, with a focus on leveraging MakeID's portable label printers and consumables for reliable results.



Master how to connect fiber optic cable with our detailed guide. Step-by-step instructions to ensure you achieve the best performance and reliability in your setup.



Free up flagging time with the BradyPrinter A5500 Fibre Optic Flag Printer Applicator. It automates the process of flagging small-diameter fiber optic cables - safely and within seconds. Flagging gives you ...



Free up flagging time with the BradyPrinter A5500 Fiber Optic Flag Printer Applicator. It automates the process of flagging small-diameter fiber optic cables - safely and within seconds.



Free up flagging time with the BradyPrinter A5500 Fiber Optic Flag Printer ...



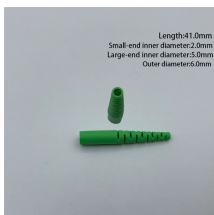
Shenzhen Azone Machinery Co.,Ltd specialized in designing, manufacturing and exporting sticker labeling machine,filling machine,sealing machine,capping machi...



Machine have two labeling method, One is Foot switch start, The other is Induction start .Directly put wire on machine, Machine will labeling automatically . Labeling is Fast and accurate.



Our fully automatic flag label marking machine is designed to streamline the labeling process for a wide range of products.



You don't need to twist the screws to adjust the machine, just input the label size ...



With smart keys for common flag label types, built-in templates and symbols, and advanced connectivity options for creating cable label tags directly from a database, it's never been easier to accurately ...

Contact Us

For more information, pricing, or custom energy solutions, please contact us:

Website: <https://www.gdroofing.co.za>

Email: sales@gdroofing.co.za

Phone: +27 72 418 9365

Address: 22 Electron Avenue, Isando, Johannesburg, 1600, South Africa

This document is for informational purposes only. Specifications subject to change without notice.

