

How to connect bent wires in a distribution box



Overview

Take a piece of 14/2 wire and strip off the outer sheath. Using linesman pliers, twist the wires together. This guide provides step-by-step instructions for connecting a distribution box and highlights key factors to consider during installation. What Is a Distribution Box?

A distribution box, also known as an electrical distribution board, is a critical component in electrical systems. more Learn how to wire a distribution box step by step! This video shows real on-site footage of. For wires that are not connected to the device, bend them so they curve around the inside edges of the box and push them flat towards the back. Make sure the power's off using a non-contact voltage tester or multimeter. It usually leaves enough space in the center of the box for the switch/receptacle and sometimes fits better.

How to connect bent wires in a distribution box



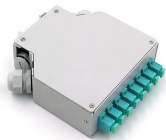
Learn how to read and understand a load center wiring diagram, including the different components and connections involved. Find step-by-step instructions ...



For wires that are not connected to the device, bend them so they curve around the inside edges of the box and push them flat towards the back. For wires that connect to the device, bend ...



I try to route the conductors in a circle around the edges of the box rather than fold them and push them in. It usually leaves enough space in the center of the box for the switch/receptacle and sometimes ...



Find out how to properly wire an electrical panel box with a comprehensive diagram and step-by-step instructions.



Learn how to connect a distribution box with this easy-to-follow, step-by-step guide. From tools and materials needed to common installation mistakes and solutions, this comprehensive article will ...



Take a piece of 14/2 wire and strip off the outer sheath. Isolate the ground wire and bend about two inches at the end. Insert the bent ground wire into the box and line it up with the existing ground ...



Learn how to wire a distribution box step by step! This video shows real on-site footage of electrical installation, demonstrating safe and standardized wiring methods used by...



Learn how to read and understand a load center wiring diagram, including the different components and connections involved. Find step-by-step instructions and diagrams to help you navigate your load ...



Below, I'll walk you through multiple ways to make basic wire connections in your home. But first, the rules: Turn off the power when working with electricity. Make sure the power's off using ...



Wiring arrangement: Arrange the wires neatly in the box, fix them with zip ties, avoid wires from tangling or coming into contact with sharp edges, and reserve a certain amount of space ...



A sweeping bend looks best, so try to maintain that angle for all hot wires as you attach them to breakers on both sides of the panel. Strip 3/8 in. to 1/2 in. of insulation from the ends of hot wires ...

Contact Us

For more information, pricing, or custom energy solutions, please contact us:

Website: <https://www.gdroofing.co.za>

Email: sales@gdroofing.co.za

Phone: +27 72 418 9365

Address: 22 Electron Avenue, Isando, Johannesburg, 1600, South Africa

This document is for informational purposes only. Specifications subject to change without notice.

