

How to connect several fiber distribution boxes



How to connect several fiber distribution boxes



In this video, we'll show you how to link multiple buildings — over 5 km apart — using just one multi-strand fiber cable and a centralized outdoor termination box.



First, connect each pre-terminated fiber optic cable to the adapter panel separately, making sure the ports correspond one-to-one; then fix the fiber optic adapter panel to the front panel ...



A simple guide to what you need to know about fiber cross connect. Its benefits, challenges, use cases, key components, and installation and configuration process.



Installing a fiber optic distribution box demands meticulous planning.



By following these guidelines, you'll be able to successfully install, maintain, and troubleshoot fiber distribution boxes across a wide range of applications, ensuring reliable fiber optic ...



What is a Fiber Distribution Box? A fiber distribution box, also called a fiber termination box, is a protective enclosure that connects fiber optic cables from the service provider to individual ...



Learn how to efficiently manage and distribute optical cables using a fiber distribution box. Explore protective sheath and organized distribution.



The Optical Line Terminal (OLT) provides the capability to distribute voice, data and video services to multiple users over a single strand of fiber at distances up to 20km.



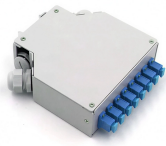
In this article, we will delve into the world of fiber optic distribution boxes - what they are, their importance, types, installation process, advantages, common challenges, maintenance ...



It can also be deployed in any cross-connect architecture and still provide clear, managed pathways for fiber. It is designed to reduce the installation time and provide easy patching access, while ...



The article categorizes the various types of fiber optic distribution boxes—including wall-mounted, rack-mounted, outdoor, and dome-shaped designs—each ...



Fiber optic patch panels are enclosures that act as a distribution hub for fiber cable. A bulk (multi-strand) fiber cable enters the patch panel and then each fiber strand is separated into individual strands or ...



To accommodate increased bandwidth demand, integrating WDM technology into fiber optic hardware helps you get more out of your existing fiber distribution network.

Contact Us

For more information, pricing, or custom energy solutions, please contact us:

Website: <https://www.gdroofing.co.za>

Email: sales@gdroofing.co.za

Phone: +27 72 418 9365

Address: 22 Electron Avenue, Isando, Johannesburg, 1600, South Africa

This document is for informational purposes only. Specifications subject to change without notice.

