

# How to connect the aluminum wires in the power distribution cabinet



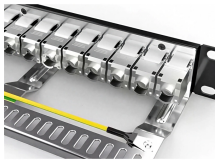
## Overview

In this guide, we'll walk you through the best methods to join aluminium wire, the essential tools you'll need, and the step-by-step process to ensure a successful splice. In this tutorial, you'll discover practical electrician techniques for winding and connecting aluminum wires with a bifurcation method. This method is often used in residential and light commercial installations where safe, efficient, and durable connections are critical. If you want to safely connect aluminum wires. Using the advantages of aluminum cable / aluminum wires - Professional connection of aluminum wires in terminal blocks Economic development and industrialization in most emerging countries are causing raw material prices on the world market to rise rapidly. Both have their advantages and disadvantages, but when they come together, things can get dicey.

## How to connect the aluminum wires in the power distribution cabinet



To make your existing wiring safe at every electrical receptacle and wall switch, the best procedure is to pigtail the aluminum conductors with copper wire. I usually use stranded copper wire ...



The brass core of the distribution block with its special coating, in combination with the hexagonal screws, allows for connection of copper and aluminum wires.



The video walks you through the complete step-by-step process — from preparing the wire ends to creating a stable and low-resistance connection.



It was learned that aluminum wire wasn't well suited for connection to the terminals on common outlets and switches. Use of a copper jumper connected between the screw terminal of the ...



Below, I'll walk you through multiple ways to make basic wire connections in your home. But first, the rules: Turn off the power when working with electricity. Make sure the power's off using ...



So how do you connect aluminum wires and what to do when you want to connect them to copper wires? Learn effective and safe work methods. What is the correct technique for joining ...



Running down the middle of the panel, buses distribute power to the various branch circuits, either through fuses or through breakers. The neutral/ground buses are long aluminum bars containing ...



According to DIN VDE 0100-520, conductors must be connected in boxes or cabinets. Connections must also be fixed in position in distribution boards, for example, by using mounting ...



Weidmüller's WPD terminal blocks enable a simple, safe and cost-effective transition from aluminum wires or aluminum cables to copper wires within the switchgear.



To prepare aluminum wire before joining, follow these essential steps to ensure a strong, safe, and durable connection: First, ensure safety by turning off the power supply to the work area ...



It was learned that aluminum wire wasn't well suited for connection to the terminals on common outlets and switches. Use of a copper jumper connected between the screw terminal of the switch or outlet and the building's aluminum wire via special connector solved this problem.

## Contact Us

For more information, pricing, or custom energy solutions, please contact us:

Website: <https://www.gdroofing.co.za>

Email: [sales@gdroofing.co.za](mailto:sales@gdroofing.co.za)

Phone: +27 72 418 9365

Address: 22 Electron Avenue, Isando, Johannesburg, 1600, South Africa

This document is for informational purposes only. Specifications subject to change without notice.

