

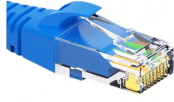
How to connect the grounding wire in a secondary distribution box



Overview

Grounding electrode conductor (GEC) - wire connecting the panel to the ground rod. Ground bus bar - inside the panel where all ground wires connect. Find the grounding bar or PE bar Open the distribution box and find the position marked with the grounding plate or PE letter. Proper grounding and bonding of this secondary panel are necessary safety. How to make proper & safe electrical ground wiring connections in the box: This article describes options for connecting a metal electrical box to the grounding conductor & connecting the grounding conductor to a fixture such as a ceiling light or ceiling fan. 24 (A) (1) through (4): (1) General. The GEC connection to the neutral conductor at service equipment must be made at any accessible point. This video will show you how to drive grounding rods, run grounding wire to them and into the electrical panel, and how to bond the panel. I use #4 AWG solid copper wire.

How to connect the grounding wire in a secondary distribution box



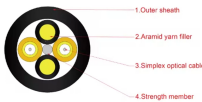
Grounding an electrical panel is an important step to keep your home and family safe. It gives extra electricity a safe path to the ground, helping prevent electric shocks, fires, and damage to ...



Once the rod is planted, connect a solid copper wire (usually 6 AWG for residential installations) from the ground rod to the ground bar within the sub panel. Ensure all connections are ...



This video will show you how to drive grounding rods, run grounding wire to them and into the electrical panel, and how to bond the panel.



This article describes options for connecting a metal electrical box to the grounding conductor & connecting the grounding conductor to a fixture such as a ceiling light or ceiling fan.



Grounding a subpanel in a detached building typically demands the right steps in installing the secondary service panel. Plus, the different wires, such as the ground wire, should be ...



Master the NEC requirements for sub panel grounding. Detailed guide on neutral separation, bonding, and grounding electrode systems.



If the main bonding jumper specified in Sec. 250.28 is a wire or busbar, you can terminate the GEC to the equipment grounding terminal, bar, or bus to which the main bonding jumper is connected, ...



All you need to do in the main panel (house) is connect the newly ran #8 ground wire to the neutral/ground bar. In the subpanel (garage) you need to buy a ground bar (looks just like the ...



Generally, copper core wire is selected as the ground wire and connected to the PE wiring bar. When connecting, it is necessary to strip the wire for a distance, then connect it to the ...



Generally, copper core wire is selected as the ground wire and connected to the PE wiring bar. When connecting, it is necessary to strip the wire ...



Make up all the ground wires into a pigtail one pigtail for the outlet and one for the box grounding. Having a mechanical connection between the grounds is not a stellar plan.

Contact Us

For more information, pricing, or custom energy solutions, please contact us:

Website: <https://www.gdroofing.co.za>

Email: sales@gdroofing.co.za

Phone: +27 72 418 9365

Address: 22 Electron Avenue, Isando, Johannesburg, 1600, South Africa

This document is for informational purposes only. Specifications subject to change without notice.

