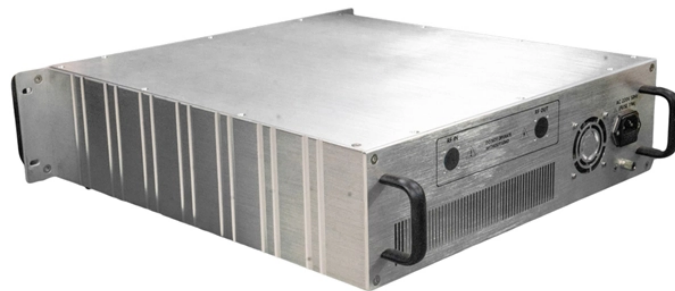


How to diagnose a fault in an optical power meter



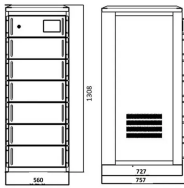
Overview

To conduct a fibre fault test, follow these steps: Connect the light source to one end of the fibre. Attach the power meter to the other end. Compare these readings to standard values to identify any faults. Below are general answers on how to operate, maintain, and calibrate an optical fiber ranger from the list of GAO Tek's optical power meters. Power On: Ensure the device is charged or properly connected to a power source. Select. Optical power abnormalities often indicate deeper issues such as fiber degradation, connector contamination, excessive attenuation, or equipment malfunction. All are written in the same straightforward format: what equipment do you need, what are the procedures for testing, options in implementing the test, measurement errors and documenting the results.

How to diagnose a fault in an optical power meter



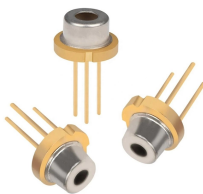
Diagnose and resolve optical power issues in modern fiber networks with this complete engineering guide. Learn how to detect loss, instability, alarms, and link degradation using power ...



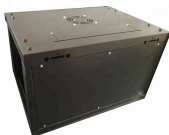
Use a power meter for fiber optic testing by cleaning connectors, setting wavelength, calibrating, and following step-by-step procedures for accurate results.



In this video, we explain how to repair an Optical Power Meter that powers ON but does NOT show any optical power reading. ...more



Testing Absolute Measurements The RP460 can be used to view the Absolute Power of a fiber by first ensuring the correct wavelength is selected, and that the unit is in dBm, then plugging the fiber into ...



It helps measure power loss in fiber optic cables when used with an optical power meter. By providing a controlled light source, LS allows for accurate testing and fault identification.



A clear, structured approach helps you accurately diagnose and confirm optical power anomalies. Below is a recommended process that incorporates both theoretical checks and practical ...



Be sure the meter is properly connected to a light source and the settings are correct. If you still experience faults clean the detector and connectors of all dirt or pollution. Also, maybe bring ...



This is your "QuickStart" guide to testing optical power in fiber optic communications systems with a fiber optic power meter. We'll give you the basic information you need and provide some printable ...



Compare Standards: Compare the measured power levels against industry standards or system specifications to determine if they fall within acceptable ranges. Troubleshoot: If readings are off, ...



This guide will guide you through the essential procedures of using power meters and light sources to diagnose and maintain your fibre optic infrastructure.

Contact Us

For more information, pricing, or custom energy solutions, please contact us:

Website: <https://www.gdroofing.co.za>

Email: sales@gdroofing.co.za

Phone: +27 72 418 9365

Address: 22 Electron Avenue, Isando, Johannesburg, 1600, South Africa

This document is for informational purposes only. Specifications subject to change without notice.

