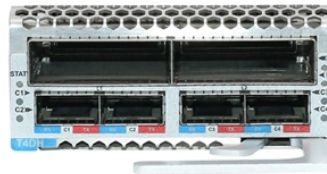


# How to distinguish left from right at a horizontal bend in a cable tray



## Overview

Horizontal Offsets: Keep the tray at the same elevation but shift it left or right to bypass vertical barriers like structural columns or machinery. When a wire cable tray is cut, the fact that a. We are installing tray around a clarifier at a WWTP and about every 20 feet we need around 10 degrees of bend. NEMA V2 does not address this that I can find. For cable management systems to be effective. Calculate horizontal, vertical, or compound cable tray offsets based on bend angle, offset distance, and available installation space. This type of bend is one of the most commonly used, especially when navigating around corners or redirecting the tray to follow the layout of the room. This led to the following questions and exhaustive exploration of cable tray.

## How to distinguish left from right at a horizontal bend in a cable tray



Types of Electrical Tray Bends Horizontal Bends (used on the same plane): Left / Right Horizontal Bend (Elbow) → 90° or 45° turns horizontally. Horizontal Tee → branching sideways.



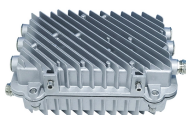
The document provides instructions for forming various bends and joints in electrical trunking and cable trays. It describes: 1) How to mark and cut a right-angle internal bend in a section of trunking, ...



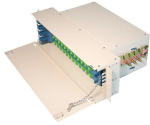
Calculate horizontal, vertical, or compound cable tray offsets based on bend angle, offset distance, and available installation space. Use this tool to estimate sloped section length, horizontal run ...



The X axis points to the left hand side of the cable tray, and the Y axis points down: So, for instance in order to create a "flat" or "sideways" elbow between two cable trays lying in the XY plane, you need to ...



The assembly guide below will help the cable tray installer make the bends and others without difficulty even he had never installed wire mesh cable trays before.



Horizontal bends help create installations that are more economical and use less space by eliminating the need for improvised fixes or long cables. They are especially crucial in settings with limited ...



The document provides instructions for forming various bends and joints in electrical trunking and cable trays. It describes: 1) How to mark and cut a right-angle ...



Drawings show different bent cable tray types like 90 degree and 45 degree horizontal bends with curved or straight radiuses. Notes specify other available sizes and provide examples of part ...



Where the cable type may be used, cable tray may be installed to support it except as per Section 392.12 which states that cable trays shall not be installed in hoistways or where subject to severe ...



Opposite to the inside bend, the vertical outside bend guides the cable tray downward, from a higher to a lower level. This type of bend is typically used to route cables from overhead trays ...



NEMA V2 states that a radius must be supported in the center of the radius and within 2" of each end where the factory bend splices to the next straight section.

## Contact Us

For more information, pricing, or custom energy solutions, please contact us:

Website: <https://www.gdroofing.co.za>

Email: [sales@gdroofing.co.za](mailto:sales@gdroofing.co.za)

Phone: +27 72 418 9365

Address: 22 Electron Avenue, Isando, Johannesburg, 1600, South Africa

This document is for informational purposes only. Specifications subject to change without notice.

