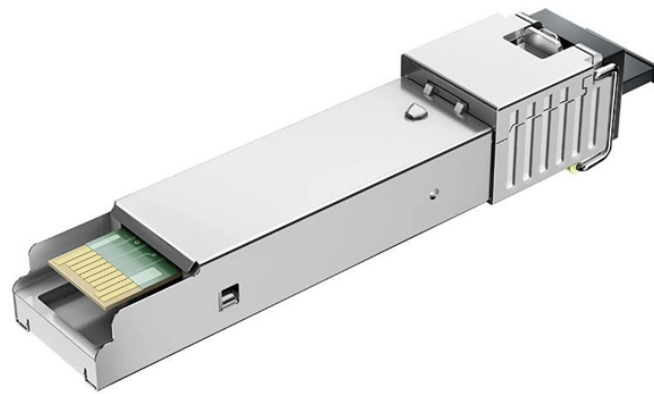


# How to install a high-voltage distribution box and its price



## Overview

This guide cuts through the complexity, offering practical advice to match your specific needs—from technical specs to supplier vetting—so you can make an informed decision with confidence. Upgrading or installing a residential electrical panel in the San Francisco Bay Area is a significant project that must meet California's stringent safety codes. Homeowners often have questions about how much panel upgrades cost, what factors influence the price, and what regulations (like Title 24. ☐☐ Complete MDB & SDB Box Electrical Work! ☐☐ This video highlights multiple High Voltage MDB (Main Distribution Board) & SDB (Sub Distribution Board) box installations — captured step by step through real project photos. Choose the right box based on environment (indoor/outdoor), load capacity, and durability. Check for proper IP/NEMA ratings and material quality. Provisions for three HV accessories and fuses. Thor specializes in R&D and overseas technical support for high-voltage cable junction boxes and other power distribution equipment.

## How to install a high-voltage distribution box and its price



Explore 8 types of cable junction boxes, their tech specs, installation tips, and maintenance. Get expert insights on selection, ...



First of all, you need to have a simple understanding of the definition of a distribution box, and make it clear which kind of distribution box you want to install. This is important to properly install it.



Installing a 150-amp electrical panel costs \$1,280–3,000, including materials and labor. This type of panel is common; it's enough for homes up to 1,800 square feet with basic electrical needs, such as ...



Explore the complete breakdown of distribution box costs, including safety features, scalability options, and operational benefits. Learn how to maximize your investment in electrical distribution systems.



The price mostly depends on the amperage of the subpanel and the complexity of running the feeder cable to it. Typical costs for a subpanel in the Bay Area might range roughly from \$500 on the low ...



Explore 8 types of cable junction boxes, their tech specs, installation tips, and maintenance. Get expert insights on selection, common faults, and international compliance



Selecting the right High Voltage Cable Branch Box can make or break your electrical project. Whether you're an engineer, procurement manager, or distributor, getting this choice right ...



High voltage distribution boxes are crucial in many areas where reliable power distribution is required. These boxes provide stability and efficiency, from industrial facilities to important infrastructure.



Fully integrated high voltage distribution box with both positive and negative contactors. High voltage fuse, precharge system, and current sensor built in. Provisions for three HV accessories and fuses.



Fully integrated high voltage distribution box with both positive and negative contactors. High voltage fuse, precharge system, and ...



☐☐ Complete MDB & SDB Box Electrical Work! ☐☐ This video highlights multiple High Voltage MDB (Main Distribution Board) & SDB (Sub Distribution Board) box installations — captured...



Learn how to install a distribution box safely and correctly. Covers wiring, placement, standards, and expert tips for a compliant setup.

## Contact Us

For more information, pricing, or custom energy solutions, please contact us:

Website: <https://www.gdroofing.co.za>

Email: [sales@gdroofing.co.za](mailto:sales@gdroofing.co.za)

Phone: +27 72 418 9365

Address: 22 Electron Avenue, Isando, Johannesburg, 1600, South Africa

This document is for informational purposes only. Specifications subject to change without notice.

