

## How to install a network module into a patch panel



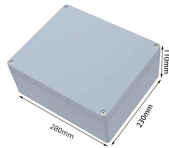
### Overview

Learn the step-by-step network patch panel and keystone jack wiring methods, including essential tools, T568A/B wiring sequences, and tool-free installation tips. This guide covers everything you need for efficient network setups, from cable preparation to final. Both work on the same principle, using the module's built-in clips to press the network cable directly into the module's wire clamps, eliminating the need for punching down steps. (\*Our company's account name is " Cobtel Precision Electronics Co. You will get seven practical steps, a compatibility checklist, and troubleshooting that maps to real failure modes. Your. This installation guide focuses on what a patch panel does, patch panel installation basics, and how to connect patch panel to switch while keeping cabling clean and easy to manage. Following these steps helps you build a clean and efficient structured cabling system that simplifies maintenance and maximizes network performance.

## How to install a network module into a patch panel



This chapter contains tasks to install Cisco NCS 1000 Breakout Patch Panel and Cisco NCS 1000 Breakout Modules.



This installation guide focuses on what a patch panel does, patch panel installation basics, and how to connect patch panel to switch while keeping cabling clean and easy to manage.



Guide to wiring Ethernet patch panels for networks. Tips on setup, wiring order, and best practices.



Step-by-step guide to building a reliable Ethernet patch panel system in server rooms. Follow TIA standards, avoid common mistakes, and ensure 10G performance.



A step-by-step guide to structured cabling patch panel setup. Learn best practices to organize network cables in your data center for peak performance.



A patch panel is a device that the Ethernet wires terminate into for a computer network. Learn more about the steps to installing yours!



This chapter contains tasks to install Cisco NCS 1000 Breakout Patch Panel and Cisco NCS 1000 Breakout Modules.



Learn a field-tested SFP module installation guide: steps, compatibility checks, fiber handling, diagnostics, and troubleshooting for reliable 1G/10G links.



This patch panel installation guide will help you understand the step-by-step process for both types, ensuring your patch panel configuration is efficient and well-organized.



Learn the step-by-step network patch panel and keystone jack wiring methods, including essential tools, T568A/B wiring sequences, and tool-free installation tips.



Connecting a patch panel involves organizing and terminating network cables for easier management and connectivity; the process focuses on punching down cables from wall jacks to the ...

## Contact Us

For more information, pricing, or custom energy solutions, please contact us:

Website: <https://www.gdroofing.co.za>

Email: [sales@gdroofing.co.za](mailto:sales@gdroofing.co.za)

Phone: +27 72 418 9365

Address: 22 Electron Avenue, Isando, Johannesburg, 1600, South Africa

This document is for informational purposes only. Specifications subject to change without notice.

