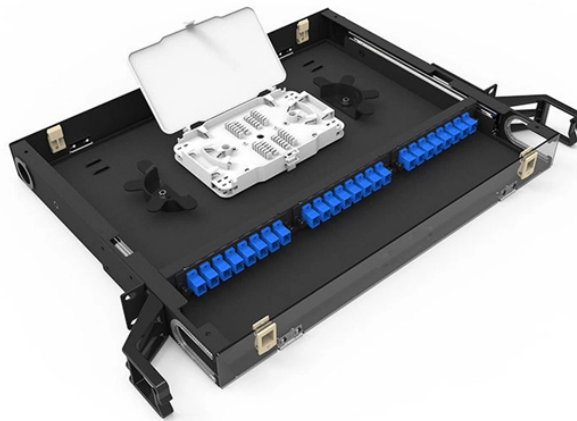


## How to install network terminal boxes in a network cabinet



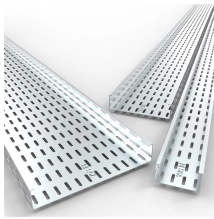
### Overview

This guide walks through a practical, real-world installation process used in FTTH deployments. Fiber Termination Boxes (FTBs) are crucial components in fiber optic networks, facilitating the termination, connection, and management of optical fibers. Covers mounting, splicing, routing, labeling, and testing for indoor/outdoor use. Whether you're a professional network installer, a tech enthusiast, or someone embarking on a DIY network project, this comprehensive guide will give you the. D. Insert the network cable into the corresponding terminal slots according to the specified sequence. Secure the cable to the cable organizer with zip ties to prevent it from falling off. Optical fiber terminal boxes can be of many different types: Straight-through Terminal Box: This terminal box has a single external hole for the receiving line. A terminal box can be divided into 2 in, 8 out, 4.

## How to install network terminal boxes in a network cabinet



Ok, I was a at a client site today doing a walkthrough for the network install in their new office space. During the design phase, I had said they should get a wall-mounted rack to put their ...



Installation of the fiber termination box must be done under the supervision of a skilled technician or engineer. Here are the various stages in the installation of the FTB.



Learn the step-by-step network patch panel and keystone jack wiring methods, including essential tools, T568A/B wiring sequences, and tool-free installation tips.



This video is designed to provide a thorough overview of network cabling installation and cabinet setup, offering valuable insights for both ...



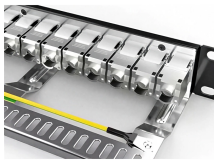
Indoor ONTs are installed inside your home, typically in a utility room, basement or another centralized spot. Outdoor ONTs are mounted outside your ...



Proper installation and maintenance of fiber optic termination boxes is critical to ensuring the reliability, performance and longevity of your fiber optic network.



Practice-oriented guide to network cabinet cabling with documentation template, safety aspects & software tips.



Installing and setting up a network cabinet system correctly is essential for maintaining an efficient and organized network infrastructure. In this comprehensive guide, we will walk you through ...



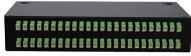
Learn the step-by-step network patch panel and keystone jack wiring methods, including essential tools, T568A/B wiring sequences, and tool-free installation tips.



How to choose, organise, and wire a company rack cabinet to create an efficient, ordered and safe network. Best practices and component guide.



Indoor ONTs are installed inside your home, typically in a utility room, basement or another centralized spot. Outdoor ONTs are mounted outside your home in a weatherproof ...



Learn how to install a fiber optic termination box step-by-step for FTTH projects. Covers mounting, splicing, routing, labeling, and testing for indoor/outdoor use.



This video is designed to provide a thorough overview of network cabling installation and cabinet setup, offering valuable insights for both beginners and experienced professionals.

## Contact Us

For more information, pricing, or custom energy solutions, please contact us:

Website: <https://www.gdroofing.co.za>

Email: [sales@gdroofing.co.za](mailto:sales@gdroofing.co.za)

Phone: +27 72 418 9365

Address: 22 Electron Avenue, Isando, Johannesburg, 1600, South Africa

This document is for informational purposes only. Specifications subject to change without notice.

